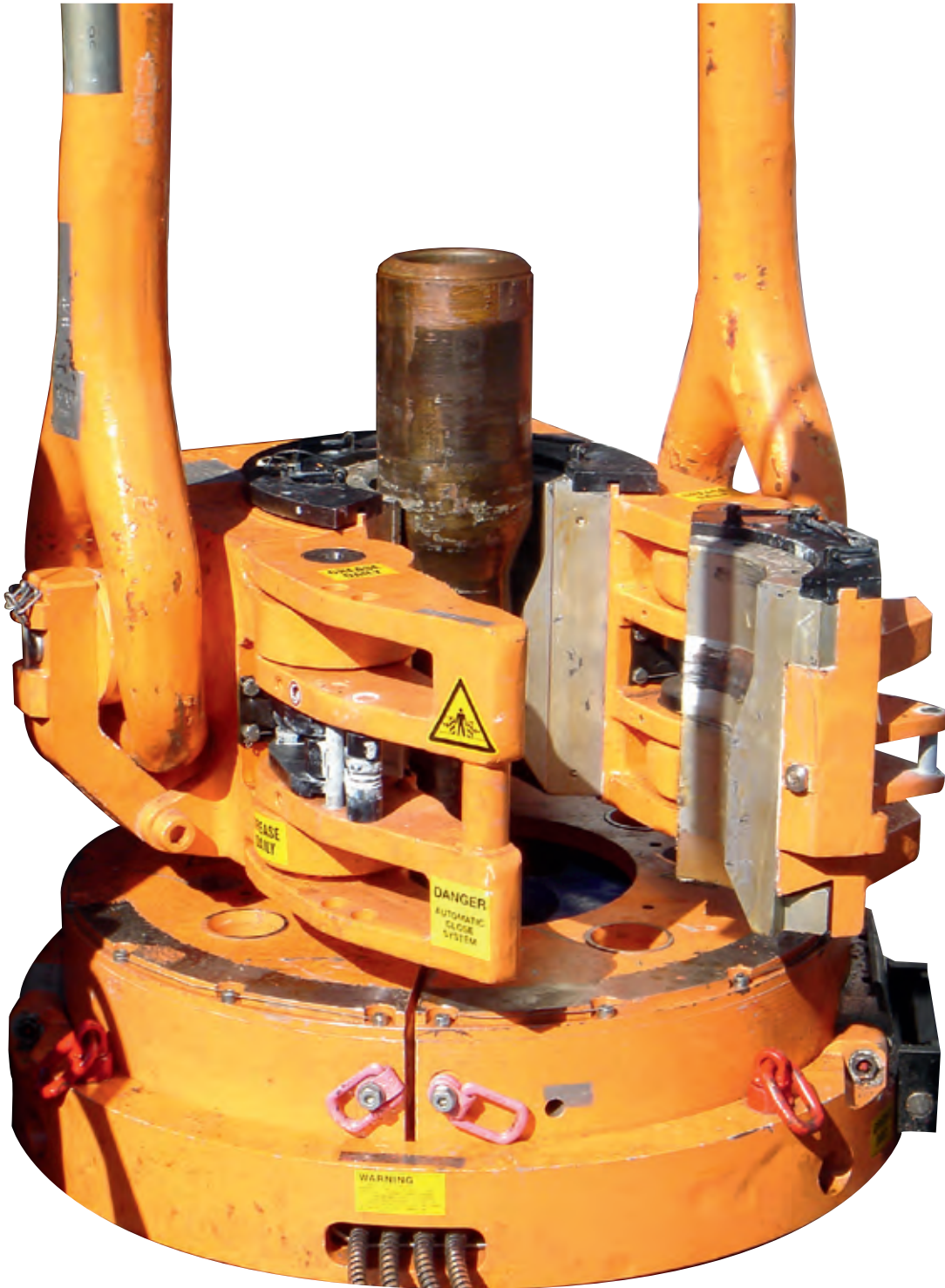


General Katalog **Pipe Handling Equipment**

FORUM B + V Oil Tools



FORUM B + V Oil Tools Pipe Handling Equipment

Brochure Contents

HOISTING EQUIPMENT:

1250t EQUIPMENT	04
LINKS.....	05
ELEVATORS	06
ELEVATOR BORE CODES	12
ELEVATOR / SPIDERS	15

RIG FLOOR EQUIPMENT:

SLIP LIFTER.....	18
WRENCH & SPINNER COMBINATION.....	19
PIPE SPINNERS	21
POWER SLIPS	22
MANUAL TONGS.....	26
ADAPTERS & MASTER BUSHINGS	29
MANUAL SLIPS	31
SAFETY CLAMPS.....	33
SDL ELEVATOR [NEW].....	34
SERVICE AND REPAIR	35
API 7K6.ed.EQUIPMENT.....	36
WORLD WIDE REPRESENTATIVES.....	40

GENERAL INFORMATION:

The manufacturing and assembly facilities of Forum B + V Oil Tools are located in the port of Hamburg, Germany.

APPLICABLE STANDARDS AND APPROVALS:

MANUFACTURING/QUALITY/ SAFETY STANDARDS:
API-8C,API-7K,ISO9001,OHSAS18001,CE,Atex,
GOST/DECLARATION, TR/RTN
TYPE APPROVAL CLASSIFICATION SOCIETIES: ABS,
DNV, GL, LR

TESTING FACILITIES:

ELEVATOR LOAD TEST UNITS up to 4,000 ton
TORQUE TESTING UNIT up to 250,000 ft/lbs
ELEVATOR LINK PULL TEST UNIT up to 1,020 ton/set, max. 720" (60 ft)

ALL LOAD CAPACITIES IN SHORT TONS UNLESS STATED OTHERWISE

Extending the capacity of Pipe Handling Equipment beyond 1250 tons

For over 45 years Forum B + V Oil Tools has been a reputed address for designing Pipe Handling Equipment for the Oil and Gas Industry both on- and offshore as well as for the geothermal industry.

On July 1, 2013 Forum B + V Oil Tools became a part of Forum Energy Technologies, Inc. Headquartered in Houston, TX USA. Forum is a global manufacturer of mission critical oilfield products.

Forum B + V Oil Tools has the know-how and financial strength to handle complex projects.

With the increasing demand for oil and gas, the industry is challenged to drill to greater depths. Forum B + V Oil Tools has been involved in the designing and manufacturing of a wide range of Pipe Handling Equipment to handle capacities beyond 1250 tons.

The products are designed and manufactured in Hamburg, Germany and in Willis, Texas, USA in accordance to the latest standards of the American Petroleum Institute API 8C and 7K.

Forum B + V Oil Tools integrated Management Systems is certified by Germanischer Lloyd System Certification and complies to DIN EN ISO 9001 and OHSAS 18001.

The Forum B + V Oil Tools GmbH offers:

- Elevator / Spider up to 1250 tons
- Elevator Links up to 720" long and up to a capacity of 1380 tons
- Power Slips 250 up to 1250 tons
- Air and hydraulic operated Elevators and Slips up to 1250 tons
- Patented Bushing Type Elevator that allows the user to utilize one Elevator frame for a wide range of pipe sizes
- Wrench & Spinner Combination
- Drill Pipe Spinners
- Casing Bushings & Hinged Casing Spiders
- Manual Tongs up to 160,000 ft-lbs.
- Manual Slips
- Safety Clamps



1250 tons Equipment

Links · Elevators · Slips

Master Bushings



AMP-1250 Automated-Multi-Pipe-Elevator	
	AMP-1250/1
Size	5.1/2" – 9.7/8"
Capacity	1250 tons
P/N with B+V controls	688 000-Z
P/N with Varco controls	688 000-Z-VC
Elevator Rotator System	678 800
Elevator Rotator Adapter	688 020
	Bushing System
Partnumber	688 006-BC**
	Accessory Tools
Hook Up Kit	648 100-HUK
Control Unit AMP with Rotator	2646
**BC = Bore Code	



PS-1250 Hydraulic operated Power Slip		
	PS-1250/1	PS-1250/2
Size	3.1/2" – 14"	14" – 24"
Capacity	1250 tons	1250 tons
Partnumber	774 000-RT*	777 100-RT*
	Slip Assemblies	
Slip Assembly 3.1/2" – 14"	774 020	
Slip Assembly 14" – 22"	777 120-1	
Slip Assembly 24"	777 120-2	
Insert Slip for 6.5/8" Landing String	774 060-112	
Carrier for DP and csg	774 070-BC**	777 670-BC
Carrier for DC	774 090-BC**	777 690-BC
	Accessory Tools	
Hook Up Kit	774 000-HUK	
Control Unit for Power Slip	757 107	
Control Unit for air operated Grease System	755 105-8	755 105-16

*RT: National (N), Wirth (W), Emsco (E) **BC= Bore Code



MPCH-1250 Load rated Master Bushing			
P/N	Type	Pipe Size	RT Size
559 100-RT*	LRMB Load Rated Master Bushing	2.3/8" - 8.5/8"	49.1/2"
559 070	Landing string Bushing for LMRB incl. Slip lifter	8.5/8" - 2.3/8"	
559 161	Slip for LRMB	6.5/8"	
559 170	Bowl #3 for Standard API handslips	8.5/8" - 2.3/8"	
*RT: National (N), Wirth (W), Emsco (E)			

SBE-1250 Solid Body Elevator				
P/N	Type	Bushing	Pipe Size	Rated Capacity
691 250-Z-BC*	SBE-1250	Fixed Bore Code	5" - 12.3/4"	1250 tons
691 250-Z-VES-1	SBE-1250-VES**	691 253-1-BC*	5" - 8.5/8"	1250 tons
691 250-Z-VES-2	SBE-1250-VES**	691 253-2-BC*	8.3/4" - 9.63"	1250 tons
691 250-Z-VES-3	SBE-1250-VES**	691 253-3-BC*	9.7/8" - 12.3/4"	1250 tons
*BC = Bore Code **Variable Elevator System with interchangeable Bushing System				

1250 tons Elevator Links				
P/N	Size	Weight	Rated Capacity	
512 180-Z-1250	5.1/2" x 180"	2630 KG (5798 lbs)	1250 tons	
512 192-Z-1250	5.1/2" x 192"	2714 KG (5983 lbs)	1250 tons	
512 200-Z-1250	5.1/2" x 200"	2798 KG (6168 lbs)	1250 tons	
512 216-Z-1250	5.1/2" x 216"	2880 KG (6349 lbs)	1250 tons	
512 240-Z-1250	5.1/2" x 240"	3060 KG (6746 lbs)	1250 tons	

other sizes upon request

Hoisting Equipment Elevator Links

150 tons Elevator Links

P/N	Size	Rated Capacity	Weight
134 048-Y	1.3/4" x 48"	150 tons	154 KG (340 lbs)
	12" increases	150 tons	18 KG (40 lbs)
134 144-Y	1.3/4" x 144"	150 tons	298 KG (655 lbs)

250 tons Elevator Links

P/N	Size	Rated Capacity	Weight
214 048-Y	2.1/4" x 48"	250 tons	180 KG (396 lbs)
	12" increases	250 tons	23 KG (51 lbs)
214 180-Y	2.1/4" x 180"	250 tons	433 KG (955 lbs)
214 240-Y	2.1/4" x 240" (20 ft.)	250 tons	544 KG (1199 lbs)
214 360-Y	2.1/4" x 360" (30 ft.)	250 tons	780 KG (1720 lbs)
214 480-Y	2.1/4" x 480" (40 ft.)	250 tons	1000 KG (2205 lbs)

350 tons Elevator Links

P/N	Size	Rated Capacity	Weight
234 048-Y	2.3/4" x 48"	350 tons	270 KG (595 lbs)
	12" increases	350 tons	29 KG (64 lbs)
234 216-Y	2.3/4" x 216"	350 tons	734 KG (1615 lbs)
234 240-Y	2.3/4" x 240" (20 ft.)	350 tons	790 KG (1742 lbs)
	60" (5 ft.) increases	350 tons	145 KG (320 lbs)
234 600-Y	2.3/4" x 600" (50 ft.)	350 tons	1766 KG (3894 lbs)
234 720-Y	2.3/4" x 720" (60 ft.)	350 tons	2090 KG (4607 lbs)

500 tons Elevator Links

P/N	Size	Rated Capacity	Weight
312 072-Y	3.1/2" x 72"	500 tons	478 KG (1050 lbs)
	12" increases	500 tons	52 KG (115 lbs)
312 216-Y	3.1/2" x 216"	500 tons	1102 KG (2425 lbs)
312 240-Y	3.1/2" x 240" (20 ft.)	500 tons	1200 KG (2645 lbs)
	60" (5 ft.) increases	500 tons	260 KG (575 lbs)
312 660-Y	3.1/2" x 660" (55 ft.)	500 tons	3236 KG (7135 lbs)
312 720-Y	3.1/2" x 720" (60 ft.)	500 tons	3300 KG (7275 lbs)

750 tons Elevator Links

P/N	Size	Rated Capacity	Weight
434 108-Y	4.3/4" x 108"	750 tons	1030 KG (2265 lbs)
	12" increases	750 tons	76 KG (170 lbs)
434 216-Y	4.3/4" x 216"	750 tons	1714 KG (3770 lbs)
434 240-Y	4.3/4" x 240" (20 ft.)	750 tons	1862 KG (4105 lbs)
	60" (5 ft.) increases	750 tons	380 KG (838 lbs)
434 660-Y	4.3/4" x 660" (55 ft.)	750 tons	4514 KG (9952 lbs)

1000 tons Elevator Links

P/N	Size	Rated Capacity	Weight
512 180-Y	5.1/2" x 180"	1000 tons	2600 KG (5798 lbs)

1250 tons Elevator Links

P/N	Size	Rated Capacity	Weight
512 180-Z-1250	5.1/2" x 180"	1250 tons	2630 KG (5798 lbs)
512 192-Z-1250	5.1/2" x 192"	1250 tons	2714 KG (5983 lbs)
512 200-Z-1250	5.1/2" x 200"	1250 tons	2798 KG (6168 lbs)
512 216-Z-1250	5.1/2" x 216"	1250 tons	2880 KG (6349 lbs)
512 240-Z-1250	5.1/2" x 240"	1250 tons	3060 KG (6746 lbs)

other sizes upon request

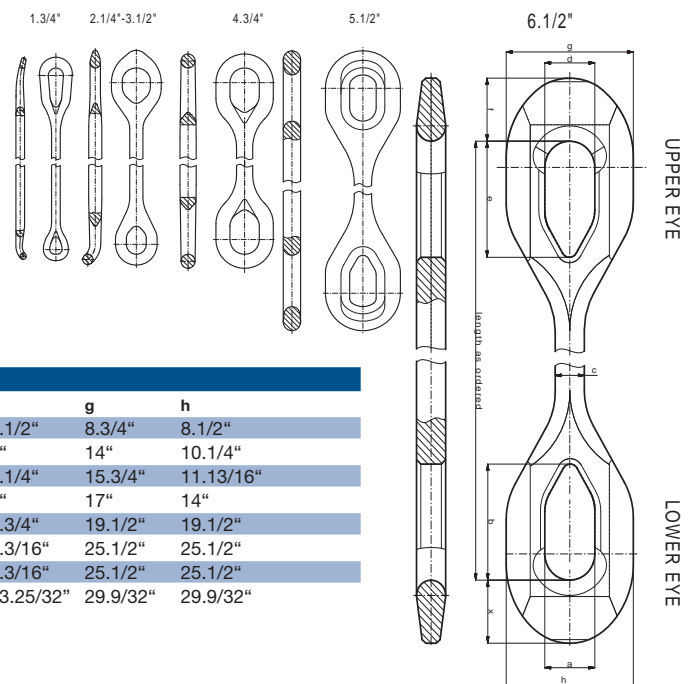
1380 tons Elevator Links

P/N	Size	Rated Capacity	Weight
612 180-Z-1380	6.1/2" x 180"	1380 tons	3580 KG (7876 lbs)

Dimensions

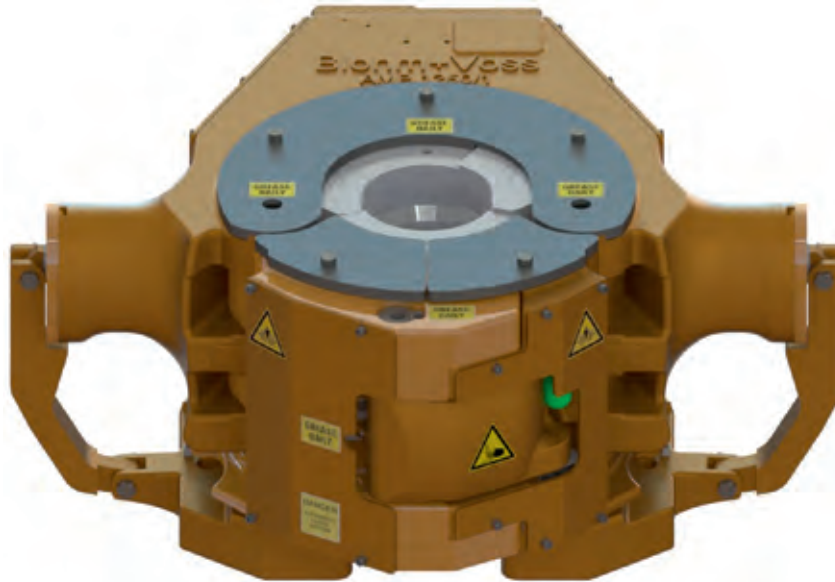
sh tons	Size	x	a	b	c	d	e	f	g	h
150	1.3/4"	1.3/4"	4"	5.1/2"	2.7/8"	5"	13.3/8"	3.1/2"	8.3/4"	8.1/2"
250	2.1/4"	2.1/4"	5.1/2"	8"	2.7/8"	8"	10.1/4"	5"	14"	10.1/4"
350	2.3/4"	2.3/4"	5.1/2"	8.1/2"	3.1/2"	9.3/8"	11.3/4"	5.1/4"	15.3/4"	11.13/16"
500	3.1/2"	3.1/2"	6.3/4"	9.1/2"	4.1/2"	9.1/2"	12"	6"	17"	14"
750	4.3/4"	4.3/4"	10"	15.1/2"	4.59/64"	10"	15.1/2"	4.3/4"	19.1/2"	19.1/2"
1000	5.1/2"	8.3/16"	9"	17.1/2"	5.1/2"	9"	15.3/4"	8.3/16"	25.1/2"	25.1/2"
1250	5.1/2"	8.3/16"	9"	17.1/2"	5.1/2"	9"	15.3/4"	8.3/16"	25.1/2"	25.1/2"
1380	6.1/2"	13.25/32"	11.1/2"	25.25/64"	6.45/64"	11.1/2"	25.25/64"	13.25/32"	29.9/32"	29.9/32"

Other Link sizes upon request



Hoisting Equipment

Automated-Multi-Pipe-Elevator



AMP Automated-Multi-Pipe-Elevator						
	AMP 350/1	AMP 350/2	AMP 500/1	AMP 500/2	AMP 750	AMP 1250/1
Size	2.3/8" - 10"	9.5/8" - 20"	2.3/8" - 11"	9.5/8" - 20"	3.1/2" - 11"	5.1/2" to 9.7/8"
Capacity	350 tons	350 tons	500 tons	500 tons	750 tons	1250 tons - 18°
Partnumber with B+V Control	638 000-Y	638 200-Y	648 100-Y	648 200-Y	678 100-Y	688 000-Z
Partnumber with NOV Control	638 000-Y-VC*	638 200-Y-VC*	648 100-Y-VC*	648 200-Y-VC*	678 100-Y-VC*	688 000-Z-VC*
Elevator Rotation System	678 800	678 800	678 800	678 800	678 800	678 800
Elevator Rotator Adapter	638 120	638 220	648 120	648 220	678 120	688 020
Control Unit	2648-2	2648-2	2648-2	2648-2	2648-2	2648-2
Bushing System						
Bushing Assembly	638 106-BC**	638 206-BC**	648 106-BC**	648 206-BC**	678 106-BC**	688 006-BC**
Accessory Tools						
Hook Up Kit	648 100-HUK	648 100-HUK	648 100-HUK	648 100-HUK	648 100-HUK	648 100-HUK
Dimensions						
Length	900 mm	1157 mm	900 mm	1150 mm	1065 mm	1135 mm
Width	1100 mm	1382 mm	1150 mm	1450 mm	1370 mm	1432 mm
Height	442 mm	442 mm	470 mm	470 mm	560 mm	632 mm
Ear to ear	750 mm	1050 mm	830 mm	1120 mm	960 mm	1050 mm
Weight***	800 KG	1020 KG	900 KG	1150 KG	1430 KG	2018 KG

*VC = Varco Control **BC = Bore Code - see page 13 ***Weight without bushings

Hoisting Equipment

Solid Body Elevator SBE-1250



SBE-1250 Specifications:

- Solid Body Elevator (SBE) for 1250 tons
- Pipe range 5" - 12.3/4"
- SBE-1250 machined for a fixed bore code
- VES-SBE 1250 with interchangeable bushings for various bore codes
- Suitable for Riser Running and Landing String operation
- Manufactured according to API 8C PSL 2

SBE-1250 Solid Body Elevator

Type	P/N	Size (inches)	Rated Capacity	Link Size
SBE-1250	691 250-Z-BC*	5" - 12.3/4"	1250 tons	1000 - 1250 tons
SBE-1250-VES**	691 250-Z-VES-1	5" - 8.5/8"	1250 tons	1000 - 1250 tons
SBE-1250-VES**	691 250-Z-VES-2	8.3/4" - 9.63"	1250 tons	1000 - 1250 tons
SBE-1250-VES**	691 250-Z-VES-3	9.7/8" - 12.3/4"	1250 tons	1000 - 1250 tons

Main dimensions

Type	P/N	Size (inches)	Height	Length	Width	Ear to Ear	Weight
SBE-1250	691 250-Z-BC*	5" - 12.3/4"	600 mm	715 mm	1282 mm	900 mm	1815 KG (4001 lbs)
SBE-1250-VES**	691 250-Z-VES-1	5" - 8.5/8"	600 mm	715 mm	1282 mm	900 mm	1547 KG (3410 lbs)
SBE-1250-VES**	691 250-Z-VES-2	8.3/4" - 9.63"	600 mm	715 mm	1282 mm	900 mm	1547 KG (3410 lbs)
SBE-1250-VES**	691 250-Z-VES-3	9.7/8" - 12.3/4"	600 mm	715 mm	1282 mm	900 mm	1547 KG (3410 lbs)

SBE-1250 Bushings

Type	P/N
SBE-1250-VES**	691 253-1-BC*
SBE-1250-VES**	691 253-2-BC*
SBE-1250-VES**	691 253-3-BC*

*BC = Bore Code - see page 13 **Variable Elevator System with interchangeable Bushing System

Hoisting Equipment

Hydraulic Operated Elevators



CL Center Latch, 18° Taper Elevator hydr.

Type	P/N	Rated Capacity	Size O.D.	Weight	Link size
CL-150/2	611 520-Y-BC*-H	150 tons	4" - 5.1/2"	300 lbs	150-350 tons
CL-250	612 540-Y-BC*-H	250 tons	3.1/2" - 5.1/2"	563 lbs	250-500 tons
CL-350	613 540-Y-BC*-H	350 tons	3.1/2" - 6.5/8"	937 lbs	250-500 tons
CL-500	615 000-Y-BC*-H	500 tons	4" - 6.5/8"	1399 lbs	500-750 tons
CL-1250	612 500-Y-BC*-H	1250 tons	7" - 9.5/8"	4500 lbs	1000-1250 tons

VES-CL Center Latch Elevator hydr.

patent #5, 755, 289

Type	P/N	Rated Capacity	Size O.D.	Weight	Link size
VES-CL-150	611 900-Y-H-TF	150 tons	2.3/8" - 5.1/4"	290 lbs	150-350 tons
VES-CL-250	612 900-Y-H-TF	250 tons	2.3/8" - 5.1/4"	563 lbs	250-500 tons
VES-CL-350	613 000-Y-H-F	350 tons	2.3/8" - 7"	937 lbs	250-500 tons
VES-CL-500	615 900-Y-H	500 tons	2.3/8" - 7"	1399 lbs	500-750 tons
VES-CL-750	617 500-Y-H	750 tons	3.1/2" - 7"	4037 lbs	750 tons
VES-CL-850	618 500-Y-H	850 tons	3.1/2" - 7"	4037 lbs	750 tons
VES-CL-1000	611 000-Y-H	1000 tons	3.1/2" - 7"	4620 lbs	1000 tons

All Elevators equipped with a Feedback Signal

VES-CL Bushings

Type	P/N
VES-CL-150/250	612 900-BC*
VES-CL-350/500	613 902-BC*
VES-CL-750/850	617 510-BC*
VES-CL-1000	611 030-BC*

* BC = Bore Code - see page 13

Hoisting Equipment

Air Operated Elevators

VES-CAE Center Latch Elevator patent #5,755,289

Type	P/N	Rated Capacity	Size O.D.	Weight	Link Size
VES-CAE 250	612 800-Y	250 tons	2.3/8" - 5.1/4"	775 lbs	250-500 tons
VES-CAE 350	613 800-Y	350 tons	2.3/8" - 7"	1120 lbs	250-500 tons
VES-CAE 500	615 800-Y	500 tons	2.3/8" - 7"	1885 lbs	500-750 tons

ACL Center Latch, 18° Taper Elevator

Type	P/N	Rated Capacity	Size O.D.	Weight	Link Size
ACL-250	612 970-Y-BC*	250 tons	3.1/2" - 5.1/2"	1090 lbs	250-500 tons
ACL-350	613 970-Y-BC*	350 tons	3.1/2" - 6.5/8"	1095 lbs	250-500 tons
ACL-500	615 970-Y-BC*	500 tons	4" - 6.5/8"	2145 lbs	500-750 tons

VES-ACL Center Latch Elevator patent #5, 755, 289

Type	P/N	Rated Capacity	Size O.D.	Weight	Link Size
VES-ACL 250	612 970-Y	250 tons	2.3/8" - 5.1/4"	1080 lbs	250-500 tons
VES-ACL 350	613 970-Y	350 tons	2.3/8" - 7"	1090 lbs	250-500 tons
VES-ACL 500	615 970-Y	500 tons	2.3/8" - 7"	2134 lbs	500-750 tons

VES-ACL, VES CAE Bushings

Type	P/N
VES-ACL / CAE-250	612 900-BC*
VES-ACL / CAE-350/500	613 902-BC*

Trigger Closing Tool

Type	P/N
ACL-250	613 700-TCT
ACL-350 / 500	613 700-TCT
VES-ACL-250	613 700-TCT
VES-ACL-350 / 500	613 700-TCT

ABVC Slip Type Elevator

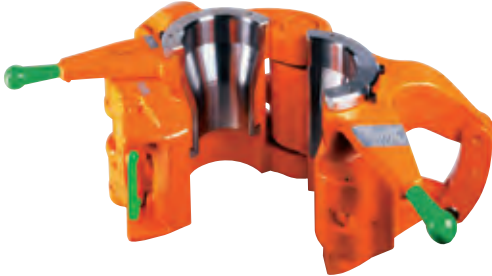
Type	P/N	Rated Capacity	Size O.D.	Weight	Link Size
ABVC-150	671 650-Y	150 tons	1.315" - 7"	1115 lbs	150 - 350 tons
ABVC-200	672 600-Y	200 tons	2.3/8" - 7.5/8"	2265 lbs	150 - 350 tons

* BC = Bore Code - see page 13



Hoisting Equipment

Manual Elevators



CL Center Latch, 18° Taper Elevator

Type	P/N	Rated Capacity	Size O.D.	Weight	Link Size
CL 150/1	611 500-Y-BC*	150 tons	2.3/8" - 3.1/2"	280 lbs	150-350 tons
CL-150/2	611 520-Y-BC*	150 tons	4" - 5.1/2"	290 lbs	150-350 tons
CL-250	612 540-Y-BC*	250 tons	3.1/2" - 5.1/2"	530 lbs	250-500 tons
CL-350	613 540-Y-BC*	350 tons	3.1/2" - 6.5/8"	680 lbs	250-500 tons
CL-500	615 000-Y-BC*	500 tons	4" - 6.5/8"	1310 lbs	500-750 tons
CL-750	617 500-Y-BC*	750 tons	2.3/8" - 8.3/4"	3940 lbs	750 tons
CL-1000	611 000-Y-BC*	1000 tons	2.3/8" - 8.3/4"	4500 lbs	1000 tons

VES-CL Center Latch Elevator

patent # 5. 755, 289

Type	P/N	Rated Capacity	Size O.D.	Weight	Link Size
VES-CL-150	611 900-Y	150 tons	2.3/8" - 5.1/4"	290 lbs	150-350 tons
VES-CL-250	612 900-Y	250 tons	2.3/8" - 5.1/4"	563 lbs	250-500 tons
VES-CL-350	613 000-Y	350 tons	2.3/8" - 7"	684 lbs	250-500 tons
VES-CL-500	615 900-Y	500 tons	2.3/8" - 7"	1399 lbs	500-750 tons
VES-CL-750	617 500-Y	750 tons	3.1/2" - 7"	4037 lbs	750 tons
VES-CL-850	618 500-Y	850 tons	3.1/2" - 7"	4037 lbs	750 tons
VES-CL-1000	611 000-Y	1000 tons	3.1/2" - 7"	4620 lbs	1000 tons

VES-CL Bushings

Type	P/N
VES-CL-150/250	612 900-BC*
VES-CL-350/500	613 902-BC*
VES-CL-750/850	617 510-BC*
VES-CL-1000	611 030-BC*

CLS Center Latch, Collar Type Elevator

Type	P/N	Rated Capacity	Size O.D.	Weight	Link Size
CLS-100/1	621 100-Y-BC*	100 tons	2.3/8" - 4.7/8"	165 lbs	150-350 tons
CLS-150/2	621 150-Y-BC*	150 tons	4.7/8" - 7.1/2"	320 lbs	150-350 tons
CLS-150/3	621 155-Y-BC*	150 tons	7.1/2" - 9.7/8"	370 lbs	150-350 tons

SDS & SDL Side Door, Collar Type Elevator

Type	P/N	Rated Capacity	Size O.D.	Weight	Link Size
SDL-150/1	651 510-Y-BC*	150 tons	4.3/8" - 8"	230 lbs	150-500 tons
SDL-150/2	651 520-Y-BC*	150 tons	8" - 11"	285 lbs	150-500 tons
SDL-150/3	651 530-Y-BC*	150 tons	11" - 14"	350 lbs	150-500 tons
SDS-150/4	641 560-Y-BC*	150 tons	13" - 16"	610 lbs	150-500 tons
SDL-150/5	651 550-Y-BC*	150 tons	18" - 22"	650 lbs	150-500 tons
SDS-150/7	641 620-Y-BC*	150 tons	24" - 30"	880 lbs	150-500 tons
SDS-250/0	642 600-Y-BC*	250 tons	6.1/2" - 9.5/8"	530 lbs	250-500 tons
SDS-250/1	642 500-Y-BC*	250 tons	9.5/8" - 13.3/8"	583 lbs	250-500 tons
SDS-250/2	642 520-Y-BC*	250 tons	13.3/8" - 18.5/8"	836 lbs	250-500 tons
SDS-250/3	642 540-Y-BC*	250 tons	18.5/8" - 20"	880 lbs	250-500 tons
SDS-250/5	642 580-Y-BC*	250 tons	24" - 30"	1410 lbs	250-500 tons
SDS-250/6	642 620-Y-BC*	250 tons	30" - 36"	1715 lbs	250-500 tons
SDS-250/7	642 630-Y-BC*	250 tons	36.1/2" - 42"	1736 lbs	250-500 tons
SDS-350/1	643 500-Y-BC*	350 tons	6.5/8" - 9.3/4"	940 lbs	350-500 tons
SDS-350/2	643 520-Y-BC*	350 tons	10.3/4" - 16.3/4"	1510 lbs	350-500 tons
SDS-350/4	643 560-Y-BC*	350 tons	18.5/8" - 21.1/2"	1395 lbs	350-500 tons
SDS-350/5	643 580-Y-BC*	350 tons	24" - 30"	2375 lbs	350-500 tons
SDS-350/6	643 570-Y-BC*	350 tons	30" - 36"	1715 lbs	350-500 tons
SDS-500	645 500-Y-BC*	500 tons	9.5/8" - 16"	2161 lbs	350-500 tons

Hydraulically version on request

* BC = Bore Code - see page 13



Hoisting Equipment

Slip Type Elevators

BVC, BVT Slip Type Elevator

Type	P/N	Range	Rating	Link size
BVT-75	670 700-Y	1.315" - 3.1/2"	75 tons	150 - 350
BVT-100	671 000-Y	1.315" - 3.1/2"	100 tons	150 - 350
BVC-75	670 720-Y	1.315" - 7"	75 tons	150 - 350
BVC-100	671 100-Y	1.315" - 7"	100 tons	150 - 350
BVC-125	671 200-Y	1.315" - 7"	125 tons	150 - 500
BVC-150	671 500-Y	1.315" - 7"	150 tons	150 - 500
BVC-200	672 000-Y	2.3/8" - 7.3/4"	200 tons	150 - 500



BVC Slip Type Elevator with Remote Slip Set

Type	P/N	Range	Rating	Link size
BVC-75-RSS	670 720-Y-RSS	1.315" - 7"	75 tons	150 - 350
BVC-100-RSS	671 100-Y-RSS	1.315" - 7"	100 tons	150 - 350
BVC-125-RSS	671 200-Y-RSS	1.315" - 7"	125 tons	150 - 500
BVC-150-RSS	671 500-Y-RSS	1.315" - 7"	150 tons	150 - 500
BVC-200-RSS	672 600-Y-RSS	2.3/8" - 7.3/4"	200 tons	150 - 500



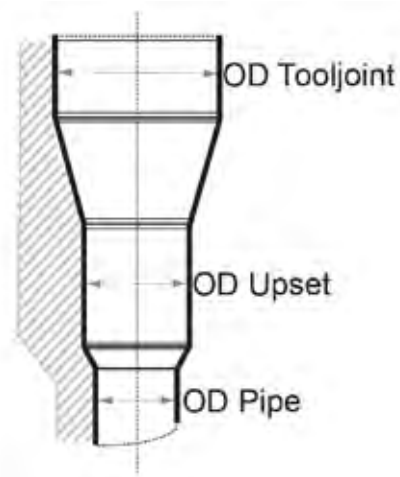
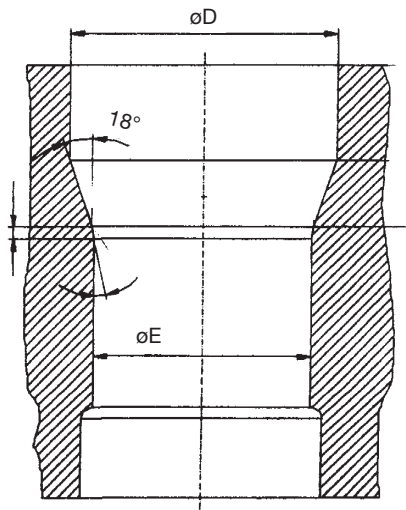
Control Units

P/N	Hose Length
671 534	4m / 13 feet
671 534-1	30m / 98 feet
671 534-2	60m / 196 feet

Slip Assemblies

Type	Rated capacity	1.315"	1.66"	1.9"	2"	2.3/8"	2.7/8"	3.1/2"	
BVT	75-100 tons	671 028	671 029	671 030	671 031	671 032	671 033	671 034	
BVC/ABVC	75-150 tons	671 168	671 169	671 170	671 171	671 172	671 173	671 134	
BVC/ABVC	200 tons					672 172	672 173	672 134	
		4"	4.1/2"	5"	5.1/2"	6.5/8"	7"	7.5/8"	7.3/4"
BVC/ABVC	75-150 tons	671 135	671 136	671 137	671 138	671 139	671 140		
BVC/ABVC	200 tons	672 135	672 136	672 137	672 138	672 139	672 140	672 175	672 176

Hoisting Equipment Elevator Bore Codes



18° Drill Pipe									
Drill Pipe Size	Type Upset	Upset Max. OD	Elevator Dimension E (new)	Connection Standard	Connection Hydrill Wedge Thread	Connection Grant Prideco	Tool Joint Max OD	Elevator Dimension D	Elevator Bore Code 18° taper
2.3/8"	EU	2.9/16"	2.21/32"	OH NC 26 (IF) SL H90 WO	WT 14S, 23, 26	XT 24, 26 HT 26 GPDS 26	3.5/8"	4.1/4"	101
2.7/8"	IU	3"	3.3/32"	PAC XH	WT 14S, 23, 26	XT 26 HT 26	3.5/8" - 4.3/8"	4.3/4"	102
2.7/8"	EU	3.3/16"	3.9/32"	NC 26 (SH) NC 31 (IF) OH SL H90 WO	WT 14S, 31	XT 31 HT 31 GPDS 31	4.3/8"	4.3/4"	103
3.1/2"	IU	3.11/16"	3.25/32"	XH NC 31 (SH)	WT 14S, 31	XT 31 HT 31	4.1/8"	4.3/4"	104
3.1/2"	EU	3.7/8"	3.31/32"	NC 38 (IF) OH SL H90 WO	WT 31, 38	XT 38 HT 38 GPDS 38	5.1/4"	5.1/2"	105
4"	IU	4.3/16"	4.9/32"	NC 40 (FH) SH H90	WT 31, 38, 39	XT 38, 39 HT 38, 40 GPDS 40	5.3/4"	6.1/2"	106
4"	EU	4.1/2"	4.25/32"	NC 46 (IF) OH WO	WT 40		6"	6.3/4"	107
4.1/2"	IU	4.11/16"	4.25/32"	H90	WT 38		6"	6.3/4"	107
4.1/2"	IEU	4.11/16"	4.25/32"	NC 46 (XH) FH NC 38 (SH) H90	WT 39, 40	XT 40, 46 HT 46 GPDS 46	6.3/8"	6.3/4"	107
4.1/2"	EU	5 - 5.1/8"	5.1/4"	NC 50 (IF) OH WO	WT 46	XT 50 HT 50	6.5/8"	7.1/8"	109
5"	IEU	5.1/8"	5.1/4"	NC 50 (XH)	WT 39, 40, 46, 50	XT 46, 50 HT 50 GPDS 50	6.5/8"	7.1/8"	109
5.1/2"	IEU	5.11/16"	5.13/16"	FH	WT 46, 50, 54, 56	XT 54, 57 HT 55 GPDS 55	7.1/2"	7.7/8"	111
5.7/8"	IEU	6"	6.1/8"		WT 54, 56	XT 57	7"	7.7/8"	115
6.5/8"	IEU	6.3/4"	7.1/32"	FH	WT 56, 66	XT 65 HT 65 GPDS 65	8.1/2"	8.7/8"	114

Hoisting Equipment Elevator Bore Codes

Plain Drill Collars with Lift Plugs

Drill collar OD	Bore code
3.1/4"	271
3.1/2"	272
4"	273
4.1/8"	274
4.1/2"	275
4.3/4"	276
5"	277
5.1/4"	279
5.1/2"	280
5.3/4"	281
6"	282
6.1/4"	284
6.3/8"	285
6.1/2"	286
6.3/4"	287
7"	288
7.1/4"	289
7.1/2"	291
8"	293
8.1/4"	295
8.1/2"	296
9"	297
9.1/2"	298
10"	301
11"	304

Casing Bore Chart

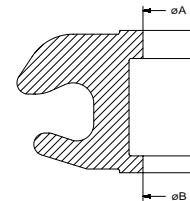
Casing size	Bore code
3.1/2"	219
4"	220
4.1/2"	221
4.3/4"	222
5"	223
5.1/2"	224
5.3/4"	225
6"	226
6.5/8"	228
7"	229
7.5/8"	231
8.5/8"	234
9"	235
9.5/8"	236
9.7/8"	265
10.3/4"	238
11.3/4"	239
11.7/8"	262
12.3/4"	241
13.3/8"	243
13.5/8"	259
14"	255
16"	245
16.3/4"	246
18"	247
18.5/8"	248
20"	249
21.1/2"	250
22"	261
24"	254
24.1/2"	251

Casing Bore Chart

Casing size	Bore code
26"	252
28"	256
30"	253
36"	257
42"	408

Drill Collars with Zip Groove

Drill collar OD	ZIP OD	Bore code
4.1/8"	3.11/18"	181
4.3/4"	4.1/4"	182
5.1/4"	4.3/4"	183
5.1/2"	5"	184
5.3/4"	5.1/8"	185
6"	5.3/8"	186
6.1/4"	5.5/8"	187
6.1/2"	5.7/8"	188
6.3/4"	6"	189
7"	6.1/4"	190
7.1/4"	6.1/2"	191
7.1/2"	6.3/4"	192
7.3/4"	7"	193
8"	7.1/4"	194
8.1/4"	7.1/2"	195
8.1/2"	7.3/4"	196
9"	8.1/8"	198
9.1/2"	8.5/8"	199
9.3/4"	8.7/8"	203
10"	9.1/8"	202

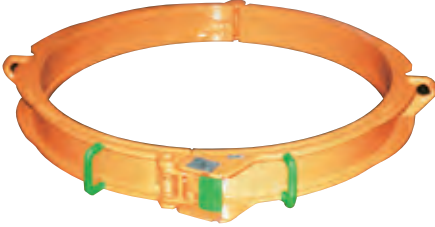


Tubing Bore Chart

Tubing size	Style	Bore code
1.050"	Plain	121
	Upset Tubing	122
1.315"	Plain	123
	Upset Tubing	124
1.660"	Plain	125
	Upset Tubing	126
1.900"	Plain	127
	Upset Tubing	128
2.3/8"	Plain	129
	Upset Tubing	130
2.7/8"	Plain	131
	Upset Tubing	132
3.1/2"	Plain	133
	Upset Tubing	134
4"	Plain	135
	Upset Tubing	136
4.1/2"	Plain	137
	Upset Tubing	138

Hoisting Equipment

Single Joint Elevators



SJS Center Latch, Single Joint Elevator

Type	P/N	Rated Capacity	Size O.D.1,7 m	Swivel Susp.	3m Swivel Susp.	Weight
LSJ-4/1	660 480-Y-BC*	4 tons	2.3/8" - 4"	660 412	660 415	28 lbs
LSJ-4/2	660 440-Y-BC*	4 tons	4" - 6"	660 412	660 415	32 lbs
SJS-5/3	660 500-Y-BC*	5 tons	6.1/2" - 9.5/8"	660 512	660 513	78 lbs
SJS-5/4	660 520-Y-BC*	5 tons	9.5/8" - 12.3/4"	660 512	660 513	98 lbs
SJS-5/5	660 540-Y-BC*	5 tons	13" - 16"	660 512	660 513	123 lbs
SJS-6/6	660 600-Y-BC*	6 tons	16.3/4" - 20"	660 612	660 614	138 lbs
SJS-6/8	660 640-Y-BC*	6 tons	22" - 30"	660 612	660 614	173 lbs
SJS-6/9	660 660-Y-BC*	6 tons	30" - 36"	660 612	660 614	185 lbs
SJS-6/10	660 680-Y-BC*	6 tons	36" - 42"	660 612	660 614	211 lbs

*BC = Bore Code - see page 13

SJD Center Latch, Single Joint Tapered Elevator for pipe 18°

Type	P/N	Rated Capacity	Size O.D.1,7 m	Swivel Susp.	Weight
SJD	650 360-Y-BC*	6 tons	2.7/8" - 5.7/8"	660 612	35 lbs
SJD	650 380-Y-BC*	6 tons	6.1/4" - 9"	660 612	80 lbs

Other sizes and tapers upon request

*BC = Bore Code - see page 13

SJ Center Latch, Single Joint Elevator

Type	P/N	Rated Capacity	Size O.D.1,7 m	Swivel Susp.	Weight
SJ-2/5	650 200-Y	2,5 tons	2.3/8" - 5.1/2"	650 312	41 lbs
SJ-3/1	650 300-Y	3 tons	3.1/2" - 7.3/4"	650 312	55 lbs



Pipe range	SJ 2/5 - Slip Assy.			SJ 3/1 - Slip Assy.		
	5° TBG	12° TBG	18° DP	5° TBG	18° DP	12° TBG
2.3/8"	650 209	650 230	650 219			650 418
2.7/8"	650 210	650 231	650 220			650 419
3.1/2"	650 211	650 232	650 221		650 411	650 420
4"	650 212	650 233	650 222		650 412	
4.1/2"	650 213	650 234	650 223	650 319	650 413	650 421
5"	650 214			650 316	650 414	
5.1/2"	650 215			650 317	650 415	650 425
5.7/8"					650 417	650 422
6.5/8"				650 313	650 416	
7"				650 314		
7.5/8"				650 315		
7.3/4"				650 311		

Hoisting Equipment Elevator / Spider



BVE / S-250 Elevator / Spider 2.3/8" - 7.5/8" 250 metric ton

API	Slip Body	Slip Assy.	Inserts	Guide Plates	Guide Plates	Description	P/N
Pipe Size:	Size	c/w Inserts	P/N Qty.	Elevator	Spider		
2.3/8"	3.1/2"	725 325	351 001 18	725 910	725 920	Body Assembly complete less Slip &	
2.7/8"	3.1/2"	725 330	350 602 18	725 910	725 920	Guide Plate Assembly (Air)	725 001-Y
3.1/2"	3.1/2"	725 355	350 103 18	725 911	725 921	Body Assembly complete less Slip &	
3.1/2"	4.1/2"	725 340	350 903 27	725 911	725 921	Guide Plate Assembly (Manual)	725 000-Y
4"	4.1/2"	725 350	350 504 27	725 911	725 921	Weight Body	1800 lbs
4.1/2"	4.1/2"	725 360	350 105 27	725 912	725 922		
4.1/2"	5.1/2"	725 375	350 905 27	725 912	725 922		
5"	5.1/2"	725 385	350 506 27	725 913	725 923		
5.1/2"	5.1/2"	725 365	350 107 27	725 913	725 923		
6.5/8"	7.5/8"	725 390	350 909 36	725 914	725 924		
7"	7.5/8"	725 380	350 610 36	725 914	725 924		
7.5/8"	7.5/8"	725 370	350 111 36	725 915	725 925		
7.3/4"	7.5/8"	725 395	350 011 36	725 915	725 925		
Dressed as an Elevator:							
						Casing Guide Bell Assy.	725 270
						Air Hose Assy. 52'	752 822
Dressed as a Spider:							
						Upper Guard Assy.	725 150
						Spider Adapter Plate (for 27.1/2" RT)	725 500
						Air Hose Assy. 26'	752 823

BVE / S-350 Elevator / Spider 4.1/2" - 14" 350 tons

API	Slip Body	Slip Assy.	Inserts	Guide Plates	Guide Plates	Description	P/N
Pipe Size:	Size	c/w Inserts	P/N Qty.	Elevator	Spider		
4.1/2"	5.1/2"	735 560	350 905 36	752 930	752 710	Body Assembly complete less Slip &	
5"	5.1/2"	735 550	350 506 36	752 935	752 715	Guide Plate Assembly (Air)	735 001-Y
5.1/2"	5.1/2"	735 540	350 107 36	752 935	752 715	Body Assembly complete less Slip &	
6.5/8"	7.5/8"	735 530-2	350 909 60	752 940	752 720	Guide Plate Assembly (Manual)	735 000-Y
7"	7.5/8"	735 500-2	350 610 60	752 940	752 720	Weight Body	3800 lbs
7.5/8"	7.5/8"	735 490-2	350 111 60	752 945	752 725		
7.3/4"	7.5/8"	735 485-2	350 011 60	752 945	752 725		
8.5/8"	9.5/8"	735 460-2	350 911 72	752 965	752 730		
9.5/8"	9.5/8"	735 450-2	350 111 72	752 970	752 735		
9.5/8"	10.3/4"	735 445-2	351 011 72	752 970	752 735		
9.7/8"	10.3/4"	735 440-2	350 811 72	752 970	752 735		
10.3/4"	10.3/4"	735 430-2	350 112 72	752 975	752 740		
10.3/4"	11.3/4"	735 435	350 912 72	752 975	752 740		
11.3/4"	11.3/4"	735 455	350 112 72	752 980	752 745		
11.7/8"	11.3/4"	735 465	350 012 72	752 980	752 745		
12.3/4"	14"	735 375-2	351 112 72	752 985-2	752 755		
13.3/8"	14"	735 380-2	350 612 72	752 990-2	752 760		
13.5/8"	14"	735 385-2	350 413 72	752 990-2	752 760		
14"	14"	735 390-2	350 113 72	752 995-2	752 770		
Dressed as an Elevator:							
						Casing Guide Bell Assy.	752 600
						Air Hose Assy. 52'	752 822
Dressed as a Spider:							
						Upper Guard Assy.	735 700
						Spider Adapter Plate (for 37.1/2" RT)	752 765-1
						Air Hose Assy. 26'	752 823

Hoisting Equipment Elevator / Spider



BVE / S-500 Elevator / Spider 4.1/2" - 14" 500 tons

API Pipe Size:	Slip Body Size	Slip Assy. c/w Inserts	Inserts P/N	Qty.	Guide Plates Elevator	Guide Plates Spider	Description	P/N
4.1/2"	5.1/2"	752 510	350 905	45	752 930	752 710	Body Assembly complete less Slip & Guide Plate Assembly (Air)	752 001-Y
5"	5.1/2"	752 500	350 506	45	752 935	752 715	Body Assembly complete less Slip & Guide Plate Assembly (Hydr.)	752 000-Y-H
5.1/2"	5.1/2"	752 490	350 107	45	752 935	752 715	Weight Body	4900 lbs
6.5/8"	7.5/8"	752 480-2	350 909	75	752 940	752 720		
7"	7.5/8"	752 470-2	350 610	75	752 940	752 720		
7.5/8"	7.5/8"	752 460-2	350 111	75	752 945	752 725		
7.3/4"	7.5/8"	752 465-2	350 011	75	752 945	752 725		
8.5/8"	9.5/8"	752 450-2	350 911	90	752 965	752 730		
9.5/8"	9.5/8"	752 440-2	350 111	90	752 970	752 735		
9.5/8"	10.3/4"	752 360	351 011	90	752 970	752 735		
9.7/8"	10.3/4"	752 370	350 811	90	752 970	752 735		
10.3/4"	10.3/4"	752 350	350 112	90	752 975	752 740		
10.3/4"	11.3/4"	752 430	350 912	105	752 975	752 740		
11.3/4"	11.3/4"	752 420	350 112	105	752 980	752 745		
11.7/8"	11.3/4"	752 535	350 012	105	752 980	752 745		
12.3/4"	14"	752 375-2	351 112	135	752 985-2	752 755		
13.3/8"	14"	752 380-2	350 612	135	752 990-2	752 760		
13.5/8"	14"	752 385-2	350 413	135	752 990-2	752 760		
14"	14"	752 390-2	350 113	135	752 995-2	752 770		

Description	P/N
Body Assembly complete less Slip & Guide Plate Assembly (Air)	752 001-Y
Body Assembly complete less Slip & Guide Plate Assembly (Hydr.)	752 000-Y-H
Weight Body	4900 lbs
Dressed as an Elevator:	
Casing Guide Bell Assy.	752 600
Hydr. Hose Assy. 52'	710 082
Air Hose Assy. 52'	752 822
Dressed as a Spider:	
Upper Guard Assy.	752 700
Spider Adapter Plate (for 37.1/2")	752 765-1
Hydr. Hose Assy. 26'	710 083
Air Hose Assy. 26'	752 823

BVE / S-500 Elevator / Spider 12.3/4" - 24.1/2" 500 tons

API Pipe Size:	Slip Body Size	Slip Assy. c/w Inserts	Inserts P/N	Qty.	Guide Plates Elevator	Guide Plates Spider	Description	P/N
12.3/4"	14"	753 400	351 112	135	753 605	753 706	Body Assembly complete less Slip & Guide Plate Assembly (Air)	753 001-Y
13.3/8"	14"	753 410	350 612	135	753 620	753 716	Body Assembly complete less Slip & Guide Plate Assembly (Hydr.)	753 000-Y-H
13.5/8"	14"	753 420	350 413	135	753 620	753 716	Weight Body	6980 lbs
14"	14"	753 430	350 113	135	753 630	753 721		
16"	16"	753 440	350 113	165	753 640	753 726		
18"	18"	753 455	350 113	180	753 645	753 756		
18.5/8"	20"	753 450	351 213	195	753 650	753 731		
20"	20"	753 460	350 113	195	753 660	753 736		
22"	22"	753 470	350 113	225	753 670	753 741		
24"	24"	753 480	350 113	225	753 680	753 746		
24"	24.1/2"	753 495	350 513	225	753 680	753 746		
24.1/2"	24.1/2"	753 490	350 113	225	753 680	753 746		

Description	P/N
Body Assembly complete less Slip & Guide Plate Assembly (Air)	753 001-Y
Body Assembly complete less Slip & Guide Plate Assembly (Hydr.)	753 000-Y-H
Weight Body	6980 lbs
Dressed as an Elevator:	
Casing Guide Bell Assy.	753 600
Hydr. Hose Assy. 52'	710 082
Air Hose Assy. 52'	752 822
Dressed as a Spider:	
Upper Guard Assy.	753 700
Spider Adapter Plate (for 49.1/2" RT)	753 765
Hydr. Hose Assy. 26'	710 083
Air Hose Assy. 26'	752 823

Hoisting Equipment Elevator / Spider



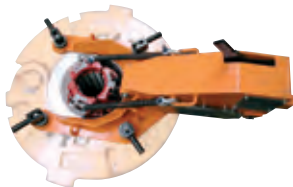
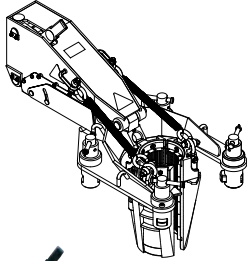
BVE / S-750-1 + BVE / S-1000/1 Elevator / Spider 4.1/2" - 14"							750 tons	1000 tons	
API Pipe Size	Slip Body Size	Slip Assy. c/w Inserts	Inserts P/N	Qty.	Guide Plates Elevator	Guide Plates Spider	Description	P/N	P/N
4.1/2"	5.1/2"	710 100-221	350 905	48	710 034	752 710	Body Assembly complete less Slip & Guide Plate Assembly (Air)	710 000-Y-A	711 000-Y-A
5"	5.1/2"	710 100-223	350 506	48	710 049	752 715	Body Assembly complete less Slip & Guide Plate Assembly (Hydr.)	710 000-Y-H	711 000-Y-H
5.1/2"	5.1/2"	710 100-224	350 107	48	710 049	752 715	Weight Body 4580 lbs		
6.5/8"	7.5/8"	710 100-228	350 909	72	710 047	752 720			
7"	7.5/8"	710 100-229	350 610	72	710 047	752 720			
7.5/8"	7.5/8"	710 100-231	350 111	72	710 048	752 725			
7.3/4"	7.5/8"	710 100-269	350 011	72	710 048	752 725			
8.5/8"	9.5/8"	710 100-234	350 911	96	710 050	752 730	Dressed as an Elevator:		
9.5/8"	9.5/8"	710 100-236	350 111	96	710 042	752 735	Casing Guide Bell Assy.	752 600	752 600
9.5/8"	10.3/4"	710 100-236-1	351 011	120	710 042	752 735	Hydr. Hose Assy. 52'	710 082	710 082
9.7/8"	10.3/4"	710 100-265	350 811	120	710 042	752 735	Air Hose Assy. 52'	752 822	752 822
10.3/4"	10.3/4"	710 100-238-1	350 112	120	710 052	752 740			
10.3/4"	11.3/4"	710 100-238	350 912	144	710 052	752 740	Dressed as a Spider:		
11.3/4"	11.3/4"	710 100-239	350 112	144	710 054	752 745	Spider Adapter Plate (for 37.1/2" RT)	752 765-1	752 765-1
11.7/8"	11.3/4"	710 100-262	350 012	144	710 054	752 745	Hydr. Hose Assy. 26'	710 083	710 083
12.3/4"	14"	710 100-241	351 112	168	710 053	752 755	Air Hose Assy. 26'	752 823	752 823
13.3/8"	14"	710 100-243	350 612	168	710 055	752 760			
13.5/8"	14"	710 100-259	350 413	168	710 055	752 760			
14"	14"	710 100-255	350 113	168	710 059	752 770			

BVE / S-750-2 + BVE / S-1000/2 Elevator / Spider 16" - 24"							750 tons	1000 tons	
API Pipe Size	Slip Body Size	Slip Assy. c/w Inserts	Inserts P/N	Qty.	Guide Plates Elevator	Guide Plates Spider	Description	P/N	P/N
16"	17"	712 100-245	350 913	192	712 041	753 726	Body Assembly complete less Slip & Guide Plate Assembly (Air)	712 000-Y-A	713 000-Y-A
18.5/8"	20"	712 100-248	351 213	240	712 044	753 731	Body Assembly complete less Slip & Guide Plate Assembly (Hydr.)	712 000-Y-H	713 000-Y-H
20"	20"	712 100-249	350 113	240	712 045	753 736	Weight Body	14 330 lbs	14 330 lbs
22"	22"	712 100-261	350 113	240	712 046	753 741			
24"	24"	712 100-254	350 113	264	712 047	753 746			

Dressed as an Elevator:								
Casing Guide Bell Assy.							753 600	753 600
Hydr. Hose Assy. 52'							710 082	710 082
Air Hose Assy. 52'							752 822	752 822
Dressed as a Spider:								
Spider Adapter Plate (for 49.1/2" RT)							753 765	753 765
Hydr. Hose Assy. 26'							710 083	710 083
Air Hose Assy. 26'							752 823	752 823

Hoisting Equipment

Slip Lifter



The Forum B + V Slip Lifter is designed to enhance safety by eliminating personnel on the rig floor when operations require the use of slips. The Slip Lifter can be operated from the drillers console or by using a foot valve at a safe distance from the rotary table. In case of loss in pressure, a safety device is installed to prevent the lifting arm from engaging. Under such circumstances, the Slip Lifter can be operated manually. The power slip accommodates B + V standard rotary slips in the range of 2.3/8" to 7", as well as most other brands.

Slip Lifter features:

- Designed to be used with pipe in the 2.3/8" to 7" range.
- Works with normal rig air supply or hydraulic.
- Adjustable speed control and safety device.
- PSA 150 is designed not to interfere with iron roughneck operations.

PSA 150 Power Slip specifications:

- Pipe range: 2.3/8" to 7"
- Dimensions: 560mm x 1200mm x 530mm (w x l x h)
- Weight: 178 kg without slip segments.
- Hydraulic version also available

Air Operated Slip Lifter

Type	P/N	Weight	Description
PSA-150	88 210	166 KG (365 lbs)	Lift up and down with Quick lock pin assembly for plain bores
PSA-150	88 310		Lift up and down with Locking assembly for bores with groove (to be used inside master bushings with slot only)

Hydraulic Operated Slip Lifter

Type	P/N	Weight	Description
PSH-150	88 210-H-F	166 KG (365 lbs)	Lift up and down with Quick lock pin assembly for plain bores
PSH-150	88 310-H-F	166 KG (365 lbs)	Lift up and down with Locking assembly for bores with groove (to be used inside master bushings with slot only)
PSH-150	88 410-H-F	166 KG (365 lbs)	Lift up and slip force down with Locking assembly for bores with groove (to be used inside master bushings with slot only)

- Can handle Drill Pipe Slips from 2.3/8" to 7"
- Lowers/Raises Drill Pipe Rotary Slips out of Bowl #3
- Fits into 23", 27.1/2" and 37.1/2" Pin Drive Master Bushings with 25.3/4" Pin Drive holes

Rig Floor Equipment

Wrench & Spinner Combination (FH-70 / 80)

FloorHand FH-70 / 80

Safety:

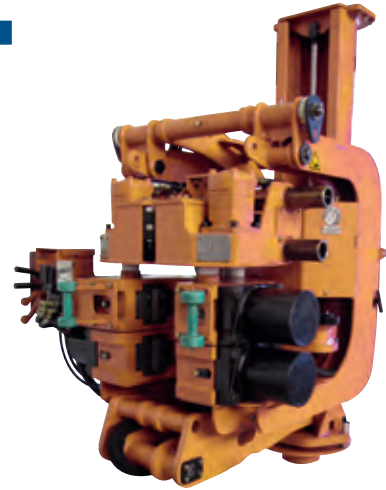
- Replaces manual tongs
- Reduces rig personal exposure
- Reduces crew fatigue

Economics:

- Low amount of spares
- Simple and easy to maintain
- No special tools for operation or maintenance

Efficiency:

- Simple logic for operating the FloorHand
- Fast, repetitive and reliable make-up torque
- Self-adjusts to a wide range of pipe sizes



FloorHand FH-70 Specifications

Size Range	Make-Up Torque	Break-Out Torque	HPU Requirements**
4" OD – 7 1/2" OD*	50,000 ft-lb	70,000 ft-lb	2,500 psi @ 25 gpm
101.6 mm OD – 190.5 mm	67,791 Nm	94,907 Nm	172 bar @ 94 l/min

Weights

FloorHand FH-70	Power Unit
4,020 lbs (1,823 kg)	2,200 lbs
	998 kg

Part Numbers (Standard Units)

FloorHand FH-70	Manipulator	Winch	Power Unit
9GF-8002	9FM-2000 Lift Cylinder Assembly	9FH-10707	9PU-7200**
	9FM-2200 Pedestal Crane Manipulator		9PU-7300** (Equipped with Heater)

FloorHand FH-80 Specifications

Size Range	Make-Up Torque	Break-Out Torque	HPU Requirements**
4" OD – 8 1/2" OD*	65,000 ft-lb	80,000 ft-lb	2,500 psi @ 25gpm
101.6 mm – 215.9 mm	83,300 Nm	108,500 Nm	172 bar @ 94 l/min

Weights

FloorHand Hanging Unit	Power Unit
4,550 lbs	2,200 lbs
2,063 kg	998 kg

Part Numbers (Standard Units)

FloorHand	Manipulator	Winch	Power Unit
9GF-1100 (Cantilever Unit)	9FM-2501 Cantilever Manipulator		
9GF-1002 (Free hanging Unit)	9FM-2000 Lift Cylinder Assembly	9FH-10701	9PU-7200**
	9FM-2200 Pedestal Crane Manipulator		9PU-7300** (Equipped with Heater)

*3 1/8" OD (79.4 mm OD) can be reached via adapter, 9FH-10703.

**It is recommended that the FloorHand is powered by the Forum B + V Hydraulic Power Unit (9PU-7200 or 9PU-7300).

Rig Floor Equipment

Wrench & Spinner Combination (FH-100)



Safety:

- Replaces manual tongs
- Reduces rig personal exposure
- Reduces crew fatigue

Economics:

- Low amount of spares
- Simple and easy to maintain
- No special tools for operation or maintenance

Efficiency:

- Simple logic for operating the FloorHand
- Fast, repetitive and reliable make-up torque
- Self-adjusts to a wide range of pipe sizes

FloorHand FH-100 Specifications

Size Range	Make-Up Torque	Break-Out Torque	HPU Requirements**
4" OD – 9 1/2" OD	80,000 ft-lb	100,000 ft-lb	2,800 psi @ 25gpm
101.6 mm – 241.3 mm	108,500 Nm	135,600 Nm	172 bar @ 94 l/min

Weights

FloorHand FH-100	Manipulator	Transport Skid	Power Unit
Manual FloorHand	7,367.6 lbs (3,41.8 kg)	9FH-01389 - 980 lbs (444 kg) (Manual)	2,200 lbs
Automated FloorHand	7,625.0 lbs (3,458.6 kg)	9FH-41080 - 1,414 lbs (641.3 kg) (auto)	998 kg

Part Numbers (Standard Units)

FloorHand	Manipulator	Transport Skid	Power Unit
9GF-4100 - Manual FloorHand	9FM-4500 Cantilever Mount with Controls	9FH-01389 (Manual)	9PU-7200**
9GF-4700 - Automated FloorHand	9FM-5000 Cantilever Mount Manipulator for Remote Controlled FloorHand	9FH-41080 (Auto)	9PU-7300** (Equipped with Heater)

**It is recommended that the FloorHand is powered by the Forum B + V Hydraulic Power Unit (9PU-7200 or 9PU7300).

Rig Floor Equipment

Pipe Spinners

GrayChain

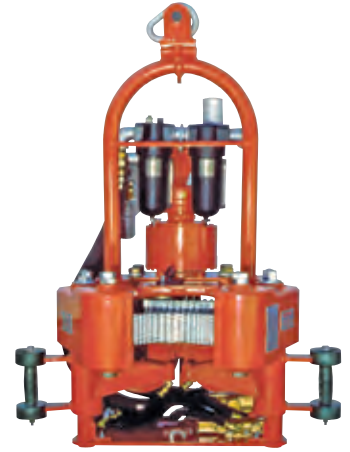
P/N	Model	Range	Weight	Power req.	Avg. RPM	Avg. Torque
9G-3570 AIR	3570 (air)	3.1/2" - 7"	850 lbs 386 Kg	240 CFM @ 100 psi 113 L/sec @ 7 bar	100	1250 ft-lbs 1695 Nm
9G-3570 HYD	3570 (hydr)	3.1/2" - 7"	800 lbs 363 Kg	20 GPM @ 2000 psi 76 L/min @ 138 bar	90	1200 ft-lbs 1627 Nm
9G-3595 AIR	3595 (air)	3.1/2" - 9.1/2"	900 lbs 408 Kg	240 CFM @ 100psi 113 L/sec @ 7 bar	100	1250 ft-lbs 1695 Nm
9G-3595 HYD	3595 (hydr)	3.1/2" - 9.1/2"	900 lbs 408 Kg	20 GPM @ 2000 psi 76 L/min @ 138 bar	90	1200 ft-lbs 1627 Nm

GraySpin

P/N	Model	Range	Weight	Power req.	Avg. RPM	Avg. Torque
9 MARK 10	Mark 10 (air)	3.1/2" - 7"	950 lbs 430 Kg	240 CFM @ 100 psi 113 L/sec @ 7 bar	100	1285 ft-lbs 1742 Nm
9 MARK 20	Mark 20 (hydr)	3.1/2" - 7"	850 lbs 385 Kg	20 GPM @ 2000 psi 76 L/min @ 138 bar	90	1285 ft-lbs 1742 Nm
9 MARK 30	Mark 30 (air)	3.1/2" - 9.1/2"	1250 lbs 567 Kg	240 CFM @ 100psi 113 L/sec @ 7 bar	100	1285 ft-lbs 1742 Nm
9 MARK 40	Mark 40 (hydr)	3.1/2" - 9.1/2"	1100 lbs 499 Kg	20 GPM @ 2000 psi 76 L/min @ 138 bar	90	1285 ft-lbs 1742 Nm

BVOTSpin

P/N	Model	Range	Weight	Power req.	Avg. RPM	Avg. Torque
9GV73109	SSW 40	3.1/2" - 9.1/2"	1200 lbs 545 kg	250 CFM	100	1100 ft-lbs 1490 Nm



Rig Floor Equipment

PS-350 Power Slip*



The new hydraulic Flush mounted Power Slip for 27.1/2" Rotary Table

- 350 tons rating for all Rotary Table types
- Compact design for pipe sizes up to 14"
- Top guide System
- Fits to all common 27.1/2" RT (non standard upon request)
- New patented* slip design for quick and easy exchange with clamping guide ring
- New patented* slip body design
- Industry standardized Inserts (non marking upon request)
- Compact hydraulic system for easy maintenance
- Feedback options for different control systems available
- Hydraulic quick coupling system upon request

PS-350 Power Slip for 27.1/2" RT - 350 tons 2.3/8" - 14"

Dimensions:	Width: 30" / 760 mm	Height: 34,64" / 880 mm
	Height over RT: 4" / 102 mm	
Weight:	PS w/o slip assy	2403 lbs / 1090 kg
	complete assembly for 9.5/8"	771 lbs / 350 kg
Rating PS	Pipe Size	2.3/8" up to 14"
	Pipe weight	max. 350 tons
Working Pressure	Hydraulic Flow Rate	min. 5 gal/min, max. 10 gal/min
	Hydraulic connections	On top of the Power Slip
Guide Plates	Top Guide Plate	Available for all pipe Sizes

PS-350

Type	P/N
PS-350	737 000
Stand alone control unit	737 160
Hook Up Kit	737 007-HUK

API Pipe Size	Slip Body Size	Slip Assy c/w Inserts	Guide Plate
2.3/8"	3.1/2"	737 570	752 690
2.7/8"	3.1/2"	737 560	752 690
3.1/2"	3.1/2"	737 550	752 705
3.1/2"	4.1/2"	737 540	752 705
4"	4.1/2"	737 530	752 705
4.1/2"	4.1/2"	737 520	752 710
4.1/2"	5.1/2"	737 510	752 710
5"	5.1/2"	737 470	752 715
5.1/2"	5.1/2"	737 490	752 715
6.5/8"	7.5/8"	737 480	752 720
7"	7.5/8"	737 500	752 720
7.5/8"	7.5/8"	737 460	752 725
7.3/4"	7.5/8"	737 465	752 725
8.5/8"	9.5/8"	737 440	752 730
9.5/8"	9.5/8"	737 450	752 735
9.5/8"	10.3/4"	737 360	752 735
9.7/8"	10.3/4"	737 370	752 735
10.3/4"	10.3/4"	737 350	752 740
10.3/4"	11.3/4"	737430	752 740
11.7/8"	11.3/4"	737 535	752 745
11.3/4"	11.3/4"	737 420	752 745
12.3/4"	14"	737 375	752 755
13.3/8"	14"	737 400	752 760
13.5/8"	14"	737 385	752 760
14"	14"	737 390	752 770

*Patent pending

Rig Floor Equipment

Hydraulic Operated Power Slips



PS-500 equipped with Top Wear Guide System



PS-1250

PS Hydraulic Operated Power Slips

	PS-500	PS-750/2	PS-1000	PS-1250/1
Size	2.3/8" - 14"	2.3/8" - 22"	2.3/8" - 22"	3.1/2" - 14"
Capacity	500 sht	750 sht	1000 sht	1250 sht
Partnumber	757 000-RT*	776 100-RT*	772 000-RT*	774 000-RT*
Accessory Tools	P/N	P/N	P/N	P/N
Hook Up Kit	756 007-HUK	775 100-HUK	775 100-HUK	774 000-HUK
Compact hydraulic Power Unit, air operated	757 150	757 150	757 150	
Control Unit PS	757 107	757 107	757 107	757 107
Control Unit PS stand alone	757 160	757 160	757 160	757 160
Control Unit Grease System 230 V AC zone 1	755 105-7	755 105-7	755 105-7	755 105-7
Control Unit Grease System 24 V DC zone 1	755 105-8	755 105-8	755 105-8	755 105-8
Slip Assemblies	P/N	P/N	P/N	P/N
Slip Assembly 2.3/8" - 14"	756 020	775 120-1	775 120-1	
Slip Assembly 14.3/4" - 20"	n.a.	775 120-2	775 120-2	
Slip Assembly 22"	n.a.	775 120-3	775 120-3	
Slip Assembly 3.1/2" - 14" for DP, Csg, TB and DC without Carrier				774 020
Optional Equipment	P/N	P/N	P/N	P/N
Hand Slip Insert Bowl No. 3 2.3/8" - 8.5/8" for manual slip handling	755 820	n.a.	n.a.	
Hand Slip Top Bowl 200 tons 11.3/4" for manual slip handling	553 600	553 600	553 600	
Reducing Bushing 9.5/8" - 10.3/4"	553 610	553 610	553 610	
Reducing Bushing 2.3/8" - 8.5/8"	553 611	553 611	553 611	
Top Wear Guide System	776 750	776 750 **	776 750**	776 750
Wear Guide 6.5/8"	776 751	776 751	776 751	776 751
Wear Guide 5.7/8"	776 752	776 752	776 752	776 752
Multi Coupling Kit	756 850	776 800	776 800	
Pipe Wiper System (fits standard 19" Dual Type Wipers)	756 750	775 990	775 990	774 930
Wiper Adapter	n.a.	n.a.	n.a.	
Bit Breaker Plate	553 455**	553 455**	553 455**	553 455**

*RT: National (N), Wirth (W), Emsco (E), Oilwell / Wirth (OW) ** requires Bit Breaker Adapter Plate P/N 775 795

Rig Floor Equipment

Hydraulic Operated Power Slips

		PS-500				PS-750/2 & PS-1000				PS-1250			
		Drillpipe				Drillpipe				Drillpipe			
OD Pipe		Insert Carrier	Insert		Guide Plate	Insert Carrier	Insert		Guide Plate	Insert Carrier	Insert		Guide Plate
			P/N	Qty			P/N	Qty			P/N	Qty	
2.3/8"		756 670-101	351 001	30	756 473	775 670-101	351 001	42	756 473				
2.7/8"		756 670-103	350 602	30	756 473	775 670-103	350 602	42	756 473				
3.1/2"		756 670-105	350 103	30	756 474	775 670-105	350 103	42	756 474	774 070-105	350 103	80	774 805
4"		756 670-106	350 504	45	756 475	775 670-106	350 504	63	756 475	774 070-106	350 504	80	774 806
4.1/2"		756 670-107	350 105	45	756 476	775 670-107	350 105	63	756 476	774 070-107	350 105	80	774 807
5"		756 670-109	350 506	60	756 476	775 670-109	350 506	84	756 476	774 070-109	350 506	120	774 809
5.1/2"		756 670-111	350 107	60	756 470	775 670-111	350 107	84	756 470	774 070-111	350 107	120	774 811
5.7/8"		756 670-115	351 008	75	756 421	775 670-115	351 008	105	756 421	774 070-115	351 008	120	774 812
6.5/8"		756 670-114	350 409	75	756 424	775 670-114	350 409	105	756 424	774 070-114	350 409	120	774 815
		Drillcollar with Zip Groove				Drillcollar with Zip Groove				Drillcollar with Zip Groove			
OD Pipe	Zip OD Groove	Insert Carrier	Insert		Guide Plate	Insert Carrier	Insert		Guide Plate	Insert Carrier	Insert		Guide Plate
			P/N	Qty			P/N	Qty			P/N	Qty	
4.3/4"	4.3/8"	756 690-182	350 205	27	756 420	775 690-182	350 205	27	756 420	774 090-182	350 205	24	774 809
5.1/4"	5.1/8"									774 090-183	350 406	36	774 809
6.1/4"	5.3/4"	756 690-187	350 910	36	756 421	775 690-187	350 910	36	756 421	774 090-187	350 910	36	774 813
6.1/2"	6"	756 690-188	350 710	36	756 424	775 690-188	350 710	36	756 424	774 090-188	350 710	36	774 815
6.3/4"	6.1/4"	756 690-189	350 510	36	756 424	775 690-189	350 510	36	756 424	774 090-189	350 510	36	774 815
7"	6.1/2"									774 090-190	350 310	36	774 815
8"	7.1/2"	756 690-194	350 911	45	756 422	775 690-194	350 911	45	756 422	774 090-194	350 911	48	774 819
8.1/4"	7.3/4"	756 690-195	350 711	45	756 425	775 690-195	350 711	45	756 425	774 090-195	350 711	48	774 822
8.1/2"	8"	756 690-196	350 511	45	756 425	775 690-196	350 511	45	756 425	774 090-196	350 511	48	774 822
8.3/4"	8.1/4"									774 090-197	350 311	48	774 824
9"	8.1/2"									774 090-198	350 911	60	774 826
9.1/2"	9"	756 690-199	350 511	45	756 423	775 690-199	350 511	45	756 423	774 090-199	350 511	60	774 827
9.3/4"	9.1/4"	756 690-203	350 311	45	756 423	775 690-203	350 311	45	756 423	774 090-203	350 311	60	774 827
10"										774 090-202	350 111	60	774 827
10.3/4"	10.1/4"					775 690-213	350 512	45	756 489				
		Drillcollar Plain				Drillcollar Plain				Drillcollar Plain			
OD Pipe		Insert Carrier	Insert		Guide Plate	Insert Carrier	Insert		Guide Plate	Insert Carrier	Insert		Guide Plate
			P/N	Qty			P/N	Qty			P/N	Qty	
3.1/8"		756 690-308	350 403	18	756 476	775 690-308	350 403	18	756 476	774 090-308	350 403	24	774 805
3.3/8"										774 090-309	350 203	24	774 805
4.3/4"		756 690-276	350 706	27	756 420	775 690-276	350 706	27	756 420	774 090-276	350 706	36	774 809
6.1/4"										774 090-284	350 510	36	774 813
6.1/2"		756 690-286	350 310	36	756 424	775 690-286	350 310	36	756 424	774 090-286	350 310	36	774 815
6.3/4"		756 690-287	350 110	36	756 424	775 690-287	350 110	36	756 424	774 090-287	350 110	36	774 815
8"		756 690-293	350 511	45	756 422	775 690-293	350 511	45	756 422	774 090-293	350 511	48	774 819
8.1/4"		756 690-295	350 311	45	756 425	775 690-295	350 311	45	756 425	774 090-295	350 311	48	774 822
8.1/2"		756 690-296	350 111	45	756 425	775 690-296	350 111	45	756 425	775 090-296	350 111	48	774 822
9"										774 090-297	350 511	60	774 826
9.1/2"		756 690-298	350 111	45	756 423	775 690-298	350 111	45	756 423	774 090-298	350 111	60	774 827
		Casing				Casing				Casing			
OD Pipe		Insert Carrier	Insert		Guide Plate	Insert Carrier	Insert		Guide Plate	Insert Carrier	Insert		Guide Plate
			P/N	Qty			P/N	Qty			P/N	Qty	
6.5/8"		756 670-228	350 909	75	756 422	775 670-228	350 909	105	756 422	774 070-288	350 909	160	774 815
7"		756 670-229	350 610	75	756 422	775 670-229	350 610	105	756 422	774 070-229	350 610	160	774 815
7.5/8"		756 670-231	350 111	75	756 422	775 670-231	350 111	105	756 422	774 070-231	350 111	160	774 819
7.3/4"										774 070-269	350 011	160	774 819
8.5/8"		756 670-234	350 911	105	756 425	775 670-234	350 911	147	756 425	774 070-234	350 911	200	774 824
9.5/8"		756 670-236	350 111	105	756 423	775 670-236	350 111	147	756 423	774 070-236	350 111	200	774 827
9.7/8"		756 670-265	350 811	105	756 477	775 670-265	350 811	147	756 477	774 070-265	350 811	240	774 827
10"		756 670-237	350 712	105	746 477	775 670-237	350 712	147	756477	774 070-237	350 712	240	774 827
10.3/4"		756 670-238	350 112	105	756 426	775 670-238	350 112	147	756 426	774 070-238	350 112	240	774 832
11.3/4"		756 670-239	350 912	135	756 427	775 670-239	350 912	189	756 427	774 070-239	350 912	280	774 833
11.7/8"		756 670-262	350 812	135	756 427	775 670-262	350 812	189	756 427	774 070-262	350 812	280	774 833
12.3/4"		756 670-241	350 112	135	756 471	775 670-241	350 112	189	756 471	774 070-241	350 112	280	774 835
13.3/8"		756 670-243	350 612	135	756 472	775 670-243	350 612	189	756 472	774 070-243	350 612	280	774 836
13.1/2"										774 070-270	350 513	280	774 836
13.5/8"		756 670-259	350 413	135	756 428	775 670-259	350 413	189	756 428	774 070-259	350 413	280	774 836
14"		756 670-255	350 113	135	756 428	775 670-255	350 113	189	756 428	774 070-255	350 113	280	774 839
16"						775 630-245	350 913	210	775 459				
17"						775 630-267	350 113	210	775 454				
18"						775 630-247	350 613	252	775 456				
18.5/8"						775 630-248	350 113	252	775 451				
20"						775 630-249	350 113	273	775 457				
22"						775 120-3	350 113	259	775 458				

Rig Floor Equipment

FPS-500 Flush Power Slip



The B+V FPS-500 Power Slip is designed to handle tubulars from 4.1/2" to 14" OD up to a capacity of max 500 tons.

Special features:

- Maximum Safe Working Load 500 tons.
- Flush mounted - providing a clean and safer work environment.
- Available as hydraulic or air operated version.
- Manual Top Guide System.
- For all pipe sizes and types from 4.1/2" up to 14"
- For all types of 37.1/2" rotary tables available.
- Existing B+V style slips can be used, without modification.
- Slip set back allows the use of protectors and centralizers.
- Slips can be equipped with non-marking inserts to reduce pipe damages.

FPS-500 Hydraulic Version	Flush Power Slip 4.1/2" - 14"	500 tons
Description	P/N	
FPS-500	754 000-RT*	

Control Unit, electr. operated	645 003-3
Hook Up Kit	754 000-HUK

FPS-500 Pneumatic Version	Flush Power Slip 4.1/2" - 14"	500 tons
Description	P/N	
FPS-500	754 000-RT*-AIR	

Stand Alone Control Unit, pneumatic operated	754 510
Hook Up Kit	754 000-AIR-HUK

API Pipe Size	Slip Body Size	Slip Assy c/w Inserts	Guide Plate
4.1/2"	5.1/2"	752 510	752 710
5"	5.1/2"	752 500	752 715
5.1/2"	5.1/2"	752 490	752 715
6.5/8"	7.5/8"	752 480-2	752 720
7"	7.5/8"	752 470-2	752 720
7.5/8"	7.5/8"	752 460-2	752 725
7.3/4"	7.5/8"	752 465-2	752 725
8.5/8"	9.5/8"	752 450-2	752 730
9.5/8"	9.5/8"	752 440-2	752 735
9.5/8"	10.3/4"	752 360	752 735
9.7/8"	10.3/4"	752 370	752 735
10.3/4"	10.3/4"	752 350	752 740
10.3/4"	11.3/4"	752 430	752 740
11.7/8"	11.3/4"	752 535	752 745
11.3/4"	11.3/4"	752 420	752 745
12.3/4"	14"	752 375-2	752 755
13.3/8"	14"	752 380-2	752 760
13.5/8"	14"	752 385-2	752 760
14"	14"	752 390-2	752 770

*RT: National (N), Wirth (W), Emsco (E)

Rig Floor Equipment

Manual Tong



BV-25 Manual Drill Pipe and Casing Tong 2.3/8" - 10.3/4"

P/N	Description	Range	Torque Rating
70 300-S	BV-25 Tong, Standard Lever, Standard Hanger*		
70 370-S	Lug Jaw Assembly	2.3/8" - 3.3/4"	15 000 ft-lbs
70 372-S	Lug Jaw Assembly	2.7/8" - 4.1/2"	20 000 ft-lbs
70 374-S	Lug Jaw Assembly	4" - 5.3/4"	25 000 ft-lbs
70 376-S	Lug Jaw Assembly	5.1/2" - 7"	25 000 ft-lbs
70 380-S	Hinge and Lug Jaw Assembly	7" - 8.5/8"	25 000 ft-lbs
70 390-S	Hinge and Lug Jaw Assembly	9.5/8" - 10.3/4"	25 000 ft-lbs

WRT-35 Manual Drill Pipe and Casing Tong 2.3/8" - 11"

P/N	Description	Range	Torque Rating
800 100-S	WRT-35 Tong, Long Lever, Standard Hanger*		
800 101-S	WRT-35 Tong, Short Lever, Standard Hanger*		
800 105-S	Lug Jaw Assembly	2.3/8" - 7.5/8"	35 000 ft-lbs
		7.5/8" - 11"	35 000 ft-lbs
800 107	Hinge Jaw Assembly	7.5/8" - 11"	35 000 ft-lbs

WRT-55 Manual Drill Pipe and Casing Tong 3.1/2" - 14.3/8"

P/N	Description	Range	Torque Rating
800 200-S	WRT-55 Tong, Long Lever, Standard Hanger*		
800 201-S	WRT-55 Tong, Short Lever, Standard Hanger*		
800 210-S	Lug Jaw Assembly	3.1/2" - 8.1/4"	55 000 ft-lbs
800 220-S	Lug Jaw Assembly	8" - 11.1/2"	55 000 ft-lbs
800 230-S	Lug Jaw Assembly	11.1/2" - 14.3/8"	55 000 ft-lbs
800 207	Hinge Jaw Assembly	11.1/2" - 14.3/8"	55 000 ft-lbs

WRT-55C Manual Casing Tong 13" - 31"

P/N	Description	Range	Torque Rating
800 240	WRT-55C, Tong Long Lever, Standard Hanger*		
800 250-S	Casing Head Assembly	13" - 14.1/2"	25 000 ft-lbs
800 255-S	Casing Head Assembly	16" - 17.1/2"	25 000 ft-lbs
800 260-S	Casing Head Assembly	17.3/4" - 18.7/8"	25 000 ft-lbs
800 265-S	Casing Head Assembly	18.1/4" - 19.5/8"	25 000 ft-lbs
800 270-S	Casing Head Assembly	19.1/2" - 21"	25 000 ft-lbs
800 275-S	Casing Head Assembly	20.3/4" - 22.1/4"	25 000 ft-lbs
800 280-S	Casing Head Assembly	24" - 25.1/2"	25 000 ft-lbs
800 290-S	Casing Head Assembly	30" - 31"	25 000 ft-lbs

Optional Available:

U-Clamp II Snub line & Pull Line saver for WRT 35, BV 55, BV 65, BV 100, WRT 160, P/N 70616

* Annotation: Less Lug Jaw- / Hinge Jaw- / Casing Head Assemblies

Rig Floor Equipment

Manual Tong

BV-55 Manual Casing Tong 25.1/2" - 36"

P/N	Description	Range	Torque Rating
71 600	BV-55 Tong w/ Long Lever less Casing Head		
71 601	BV-55 Tong w/ Short Lever less Casing Head		
71 609-S	Casing Head Assembly	25.1/2" - 27"	25 000 ft-lbs
71 610-S	Casing Head Assembly	27" - 28.1/2"	25 000 ft-lbs
71 611-S	Casing Head Assembly	28.1/2" - 30"	25 000 ft-lbs
71 612-S	Casing Head Assembly	30" - 31.1/2"	25 000 ft-lbs
71 613-S	Casing Head Assembly	31.1/2" - 33"	25 000 ft-lbs
71 614-S	Casing Head Assembly	33" - 34.1/2"	25 000 ft-lbs
71 615-S	Casing Head Assembly	34.1/2" - 36"	25 000 ft-lbs

BV-65 Manual Drill Pipe and Casing Tong 3.1/2" - 21.1/2"

P/N	Description	Range	Torque Rating
70 700-S	BV-65 Tong, Long Lever, Long Hanger*		
70 701-S	BV-65 Tong, Short Lever, Standard Hanger*		
70 702-S	BV-65 Tong, Long Lever, Standard Hanger*		
70 703-S	BV-65 Tong, Short Lever, Long Hanger*		
70 780-S	Lug Jaw Assembly	3.1/2" - 8.1/4"	65 000 ft-lbs
70 782-S	Lug Jaw Assembly	8" - 11.1/4"	65 000 ft-lbs
70 783-S	Lug Jaw Assembly	11.3/4" - 14.3/8"	50 000 ft-lbs
70 784-S	Lug Jaw Assembly	16" - 17"	50 000 ft-lbs
70 785	Hinge Jaw Assembly	8" - 17"	65 000 ft-lbs
		18.5/8" - 21.1/2"	65 000 ft-lbs
70 791-S	Lug Jaw Assembly	18.5/8" - 20"	50 000 ft-lbs
70 792-S	Lug Jaw Assembly	20" - 21.1/2"	50 000 ft-lbs
70 793	Hinge Jaw Assembly	18.5/8" - 21.1/2"	50 000 ft-lbs

BV-80 Manual Drill Pipe and Casing Tong 3.1/2" - 13.3/8"

P/N	Description	Range	Torque Rating
70 100-S	BV-80 Tong, Long Lever, Long Hanger*		
70 101-S	BV-80 Tong, Short Lever, Standard Hanger*		
70 180-S	Lug Jaw Assembly	3.1/2" - 4.1/2"	30 000 ft-lbs
70 181-S	Lug Jaw Assembly	4" - 5.1/4"	30 000 ft-lbs
70 182-S	Lug Jaw Assembly	5" - 6"	65 000 ft-lbs
70 183-S	Lug Jaw Assembly	6" - 7"	65 000 ft-lbs
70 184-S	Lug Jaw Assembly	7" - 9"	80 000 ft-lbs
70 185-S	Lug Jaw Assembly	9" - 10.3/4"	50 000 ft-lbs
70 186-S	Lug Jaw Assembly	10.3/4" - 11.3/4"	50 000 ft-lbs
70 187-S	Lug Jaw Assembly	13.3/8"	50 000 ft-lbs

Optional Available:

U-Clamp II Snub line & Pull Line saver for WRT 35, BV 55, BV 65, BV 100, WRT 160, P/N 70616

* Annotation: Less Lug Jaw- / Hinge Jaw- / Casing Head Assemblies



Rig Floor Equipment

Manual Tong



BV-100 Manual Drill Pipe and Casing Tong 4" - 21"

P/N	Description	Range	Torque Rating
70 800-S	BV-100 Tong, Long Lever, Long Hanger*		
70 801-S	BV-100 Tong, Long Lever, Standard Hanger*		
70 880-S	Lug Jaw Assembly	4" - 8.1/2"	100 000 ft-lbs
70 882-S	Lug Jaw Assembly	8.1/2" - 12"	100 000 ft-lbs
70 883-S	Lug Jaw Assembly	12" - 15"	75 000 ft-lbs
70 884-S	Lug Jaw Assembly	15.3/4"	100 000 ft-lbs
70 885-S	Lug Jaw Assembly	16" - 17"	60 000 ft-lbs
70 886	Hinge Jaw Assembly	8.1/2" - 17"	100 000 ft-lbs
800 430-S	Lug & Hinge Jaw Assembly	18.5/8" - 21"	50 000 ft-lbs

* also available hydraulically operated

BV-100C Casing Head Manual Tong Assemblies

P/N	Description	Range	Torque Rating
71 810-S	BV-100C Casing Head Tong	23.4" - 24.5"	100 000 ft-lbs
71 812-S	BV-100C Casing Head Tong	25.3" - 26.3"	100 000 ft-lbs
71 814-S	BV-100C Casing Head Tong	27.4" - 28.4"	100 000 ft-lbs
71 816-S	BV-100C Casing Head Tong	29.5" - 30.6"	100 000 ft-lbs
71 822-S	BV-100C Casing Head Tong	35.5" - 36.7"	100 000 ft-lbs
71 823-S	BV-100C Casing Head Tong	37" - 42"	100 000 ft-lbs

WRT-160 Manual Tong & Lug Jaw assy

P/N	Description	Range	Torque Rating
800 500-S-160	WRT-160 Manual Tong	c/w Long Lever and Hanger Assy 7.1/2"-12"	160 000 ft-lbs
800 510-S-160	Lug Jaw Assembly	7.1/2" - 8.1/2" & 9.1/2" - 10. 3/4"	160 000 ft-lbs
800 520-S-160	Lug Jaw Assembly	8.1/2" - 9.7/8" & 10.3/4"-12"	160 000 ft-lbs

Manual Tong Dies

P/N	BV 25	WRT 35	WRT 55	BV 65	BV 80	BV 100	WRT 135/160
70 322	3	5				5	
70 622			5	5	4		5
	BV 55C	BV 100C		BV 35	BV 37	BV 55	BV 57
70 222					4		
70 322		3		4			
70 622	2					4	4
70 327	Die Driver for Tongs 1" & 1.1/4"						

Lever Long

Lever	P/N	A = mm / inch
BV-25	70 310	702/27,5"
BV-35	70 410	968/38"
BV-55	70 610	1170/46"
BV-55C	70 610	1170/46"
BV-65	70 710	1170/46"
BV-80	70 110	1369/54"
BV-100	70 810	1200/47,5"
BV-100C	70 810	1200/47,5"
WRT-35	800 101	920/36"
WRT-55	800 201	1080/42,5"
WRT-55C	800 201	1080/42,5"
WRT-160	800 501	1185/44,5"

Lever Short

Lever	P/N	A = mm / inch
BV-25	n.a.	n.a.
BV-35	70 491	730/28,5"
BV-55	70 691	1015/40"
BV-55C	70 691	1015/40"
BV-65	70 712	847/33,5"
BV-80	70 170	1204/47,5"
BV-100	n.a.	n.a.
BV-100C	n.a.	n.a.
WRT-35	800 102	700/27,5"
WRT-55	800 202	945/37"
WRT-55C	800 202	945/37"
WRT-160	n.a.	n.a.

Optional Available:

U-Clamp II Snub line & Pull Line saver for WRT 35, BV 55, BV 65, BV 100, WRT 160, P/N 70616

* Annotation: Less Lug Jaw- / Hinge Jaw- / Casing Head Assemblies

Rig Floor Equipment

Master Bushings & RT-Adapters



Master Bushings

P/N	RT Brand	Type	RT-Size
553 410	Emsco	Hinged Master Bushing MPCH*	49.1/2"
553 350	NOV	Hinged Master Bushing MPCH*	37.1/2"
553 340	Emsco	Hinged Master Bushing MPCH*	37.1/2"
553 300	Wirth	Hinged Master Bushing MPCH*	37.1/2"

*incl. Bowl No.3, Liftings Slings & Bit Breaker Adapter Plate

Bowls

P/N	Type	Pipe-Size
556 608	Bowl #3 for 37.1/2" Master Bushing	8.5/8" & smaller
556 609	Bowl #2 for 37.1/2" Master Bushing	10.3/4" - 9.5/8"
556 610	Bowl #1 for 37.1/2" Master Bushing	13.3/8" - 11.3/4"
551 810	Bowl #3 for 27.1/2" Master Bushing	8.5/8" & smaller
551 904	Bowl #2 for 27.1/2" Master Bushing	10.3/4" - 9.5/8"
551 903	Bowl #1 for 27.1/2" Master Bushing	13.3/8" - 11.3/4"

MPCH-1250 Load rated Master Bushing

P/N	Type	Pipe Size	RT Size
559 100-RT**	LRMB Load Rated Master Bushing	2.3/8" - 8.5/8"	49.1/2"
559 070	Landing string Bushing for LMRB incl. Slip lifter	8.5/8" - 2.3/8"	
559 161	Slip for LRMB	6.5/8"	
559 170	Bowl for Standard API handslips	8.5/8" - 2.3/8"	

**RT: National (N), Wirth (W), Emsco (E)

RT-Adapters

P/N	RT Brand	Type	RT-Size
553 285	NOV/NOV	Split Adapter	75.1/2" x 49.1/2"
553 220	NOV/NOV	Solid Adapter	60.1/2" x 49.1/2"
553 230	NOV/NOV	Hinged Adapter	60.1/2" x 49.1/2"
553 290	NOV/NOV	Split Adapter	60.1/2" x 49.1/2"
553 200	NOV/NOV	Solid Adapter	49.1/2" x 37.1/2"
553 210	NOV/NOV	Hinged Adapter	49.1/2" x 37.1/2"
553 240	NOV/Oilwell/Wirth	Solid Adapter	49.1/2" x 37.1/2"
553 295	NOV/Lewco	Split Adapter	49.1/2" x 37.1/2"
553 260	NOV/Oilwell/Wirth	Split Adapter	49.1/2" x 37.1/2"
553 250	NOV/Oilwell/Wirth	Hinged Adapter	49.1/2" x 37.1/2"
553 245	Wirth/Oilwell/Wirth	Solid Adapter	49.1/2" x 37.1/2"
553 270	NOV/API	Solid Adapter	37.1/2" x 27.1/2"
553 280	NOV/NOV	Split Adapter	37.1/2" x 27.1/2"
553 265	NOV/NOV	Hinged Adapter	37.1/2" x 27.1/2"
553 275	Emsco/NOV	Solid Adapter	37.1/2" x 27.1/2"

Rig Floor Equipment

Casing Bushings & Hinged Casing Spiders



Casing Bushings 37.1/2" Rotary table

P/N	RT Brand	Type	Pipe-Size
553 727	NOV	Split Casing Bushing	30"
553 727-2	Oilwell/Wirth	Split Casing Bushing	30"
553 726	NOV	Split Casing Bushing	26"
553 726-2	Oilwell/Wirth	Split Casing Bushing	26"
553 725	NOV	Split Casing Bushing	24"
553 725-2	Oilwell/Wirth	Split Casing Bushing	24"
553 745	NOV	Split Casing Bushing	22"
553 720	Emsco	Split Casing Bushing	20" - 18.5/8"
553 720-1	NOV	Split Casing Bushing	20" - 18.5/8"



HCS Hinged Casing Spiders

P/N	Type	Pipe-Size	Comment
553 650	HCS-200 for 42" Pipe Size	42"	
553 660	Reducing Bushing	42" to 40"	
553 651	Reducing Bushing for 42" x 36" Pipe Size	42" to 36"	
553 492	HCS-200 for 36" Pipe Size	36"	
553 497	Reducing Bushing for 36" x 32" Pipe Size	36" x 32"	
553 493	Reducing Bushing for 36" x 30" Pipe Size	36" x 30"	
553 494	Reducing Bushing for 36" x 26" Pipe Size	36" x 26"	
553 499	Reducing Bushing for 36" x 24" Pipe Size	36" x 24"	
553 498	Reducing Bushing for 36" x 20"-18.5/8" Pipe Size	36" x 20"	
553 480	HCS-200 for 30" Pipe Size	30"	
553 463-1	Reducing Bushing for 30" x 20" Pipe Size	30" x 20"	
553 490	HCS-200 for 20" - 18.5/8" Pipe Size	20" - 18.5/8"	
553 630	Reducing Bushing for 20" x 16" Pipe Size	20" x 16"	
553 475	Reducing Bushing for 20"x13.3/8"-11.3/4" PipeSize	20" x 13.3/8" - 11.3/4"	
553 610	Reducing Bushing for 13.3/8"x10.3/4"-9.5/8"	13.3/8" x 10.3/4" - 9.5/8"	used with Reducing Bushing for 20" x 13.3/8" - 11.3/4"
553 611	Reducing Bushing for 13.3/8" x 8.5/8" - 2.3/8"	13.3/8" x 8.5/8" - 2.3/8"	used with Reducing Bushing 20" x 13.3/8" - 11.3/4"
553 600	HCS-200 for 13.3/8" - 11.3/4" Pipe Size	13.3/8" - 11.3/4"	
553 610	Reducing Bushing for 13.3/8" x 10.3/4" - 9.5/8"	13.3/8" x 10.3/4" - 9.5/8"	
553 611	Reducing Bushing for 13.3/8" x 8.5/8" - 2.3/8"	13.3/8" x 8.5/8" - 2.3/8"	
553 670	HCS-350 for 36" Pipe Size	36"	
553 675	Reducing Bushing for 36" x 32"	36" x 32"	
553 677	Reducing Bushing for 36" x 30"	36" x 30"	
553 462	Reducing Bushing for 36" x 26"	30" x 26"	
553 463	Reducing Bushing for 36" x 24"	30" x 24"	
553 464	Reducing Bushing for 36" x 20"-18.5/8"	30" x 20" - 18.5/8"	
552 465	Reducing Bushing for 20" x 16"	20" x 16"	
553 736	Reducing Bushing for 20" x 13.3/8" - 11.3/4"	20" x 13.3/8" - 11.3/4"	
553 615	HCS-350 for 13.3/8" - 11.3/4" Pipe Size	13.3/8" - 11.3/4"	
553 618	Reducing Bushing for 13.3/8" x 8.5/8" - 2.3/8"	13.3/8" x 8.5/8" - 2.3/8"	
553 460	HCS-500 for 30" Pipe Size	30"	
552 462	Reducing Bushing for 30" x 26"	30" x 26"	
553 463	Reducing Bushing for 30" x 24"	30" x 24"	
553 464	Reducing Bushing for 30" x 20" - 18.5/8"	30" x 20" - 18.5/8"	
552 465	Reducing Bushing for 20" x 16"	20" to 16"	used with Reducing Bushing 30" x 20" - 18.5/8"
553 485	HCS-500 for 20" - 18.5/8"	20" - 18.5/8"	
552 465	Reducing Bushing for 20" x 16"	20" x 16"	
553 736	Reducing Bushing for 20" x 13.3/8" - 11.3/4"	20" x 13.3/8" - 11.3/4"	
553 737	Reducing Bushing for 13.3/8" x 10.3/4" - 9.5/8"	13.3/8" x 10.3/4" - 9.5/8"	used with Reducing Bushing 20" x 13.3/8" - 11.3/4"
553 738	Reducing Bushing for 20" x 10.3/4"-9.5/8"	20" x 10.3/4" - 9.5/8"	

All Forum B + V Slips have an API Taper of 4" In/ft on the diameter

Rig Floor Equipment

Manual Rotary Slips

RSM Rotary Slip

Slip Body Size	Pipe Size O.D.	Slip Assembly P/N	Insert P/N	Qty.
3.1/2"	2.3/8"	82 110-2	80 110	30
3.1/2"	2.7/8"	82 120-2	80 111	30
3.1/2"	3.1/2"	82 130-2	80 112	30

RSX Rotary Slip

Slip Body Size	Pipe Size O.D.	Slip Assembly P/N	Insert P/N	Qty.
4.1/2"	3.1/2"	83 210-2	80 113	54
4.1/2"	4"	83 220-2	80 114	54
4.1/2"	4.1/2"	83 230-2	80 115	54
5"	4"	83 310-2	80 118	54
5"	4.1/2"	83 320-2	80 116	54
5"	5"	83 330-2	80 117	54
5.1/2"	4.1/2"	83 410-2	80 118	54
5.1/2"	5"	83 420-2	80 119	54
5.1/2"	5.1/2"	83 430-2	80 120	54
6.5/8"	5.3/4"	83 550-2	270 808	54
6.5/8"	5.7/8"	83 540-2	270 708	54
6.5/8"	6.5/8"	83 520-2	270 109	54
7"	6"	83 510	80 118	72
7"	6.5/8"	83 520	80 122	72
7"	7"	83 530	80 123	72

LRS 750 tons Load Rated Slip

Slip Body Size	Pipe Size O.D.	Slip Assembly P/N	Insert P/N	Qty.	Load Ring P/N	Qty.
5.1/2"	4.1/2"	83 730	80 118	45	83 405-1	6
5.1/2"	5"	83 720	80 119	45	83 405-1	6
5.1/2"	5.1/2"	83 710	80 120	45	83 405-1	6
6.5/8"	5.7/8"	83 620-2	270 708	45	83 405-2	6
6.5/8"	6.5/8"	83 610-2	270 109	45	83 405-2	6
7"	7"	83 810	80 123	60	83 405-3	6
7"	6.906"	83 830	270 210	60	83 405-3	6

DCS Multisegment Drill Collar Slip

API Pipe Size O.D.	Slip complete w/Circular Buttons P/N	Button P/N	Qty.	Used inside Bowl
3" - 4"	84 110	80 155	49	Bowl #3
4" - 4.7/8"	84 120	80 151	49	Bowl #3

DCM Multisegment Drill Collar Slip

API Pipe Size O.D.	Slip complete w/Circular Buttons P/N	Button P/N	Qty.	Used inside Bowl
4.1/2" - 6"	85 110	80 155	63	Bowl #3
5.1/2" - 7"	85 120	80 151	63	Bowl #3

DCL Multisegment Drill Collar Slip

API Pipe Size O.D.	Slip complete w/Circular Buttons P/N	Button P/N	Qty.	Used inside Bowl
6.3/4" - 8.1/4"	86 120	80 156	88	Bowl #3
8" - 9.1/2"	86 130	80 156	96	Bowl #3
8.1/2" - 10"	86 140	80 154	104	Bowl #2
9.1.4" - 11.1/4"	86 150	80 156	112	Bowl #2
11" - 12.3/4"	86 160	80 152	136	Bowl #1
12" - 14"	86 170	80 156	136	Bowl #1

All Forum B + V Slips have an API Taper of 4" In/ft on the diameter



Rig Floor Equipment

Manual Casing Slips



CSL-Extra Long Casing Slip				
Pipe Size	Slip complete w/Circular Buttons		Button	Used inside Bushing/Bowl Description
	P/N	P/N	Qty.	
6.5/8"	87 110	80 155	144	MPCH with bowl #3
7"	87 120	80 150	144	
7.5/8" & 7.3/4"	87 130	80 156	144	
8.5/8"	87 140	80 156	156	
9.5/8" & 9.7/8" -10"	87 150	80 156	168	MPCH with bowl#2
10.3/4"	87 160	80 156	180	
9.3/8"	87 145	80 154	168	
11"	87 165	80 158	204	MPCH with bowl #1
11.3/4" & 11.7/8"	87 170	80 154	204	
12.3/4"	87 175	80 158	204	
13.3/8" & 13.1/2"	87 180	80 156	216	
13.5/8" & 14"	87 195	80 158	240	16" CB
15"	87 196	80 158	264	
16" & 16.3/4"	87 190	80 157	252	
17.7/8" & 18"	87 205	80 158	288	20" CB
18.5/8" & 18.3/4"	87 200	80 153	300	
20"	87 210	80 157	312	
22"	87 215	80 158	360	24" CB
24"	87 220	80 157	360	
24.1/2"	87 225	80 158	384	26" CB
26"	87 230	80 157	396	
28"	87 235	80 158	432	30" CB
30"	87 240	80 157	444	
42"	87 280	80 157	612	42" CB

CSC-Conductor Pipe Slip				
Pipe Size	Slip complete w/Circular Buttons		Button	Used inside Bushing/Bowl Description
	P/N	P/N	Qty.	
24"	88 110	80 157	156	24" CB
26"	88 120	80 157	168	26" CB
28"	88 125	80 157	180	30" CB
30"	88 130	80 157	192	30" CB
32"	88 140	80 157	204	36" CB
36"	88 160	80 157	228	36" CB

All Forum B + V Slips have an API Taper of 4" In/ft on the diameter

Rig Floor Equipment Safety Clamps

T-Clamp

Manual P/N	Range O.D.		Total # of Links
	from	to	
88 003	1.1/8"	2"	4
88 004	2.1/8"	3.1/4"	5
88 005	3.1/4"	4.1/2"	6

C-Clamp

Manual P/N	Range O.D.		Total # of Links
	from	to	
99 500	3.3/4"	4.5/8"	7
99 501	4.1/2"	5.5/8"	8
99 502	5.1/2"	6.5/8"	9
99 503	6.1/2"	7.5/8"	10
99 504	7.1/2"	8.5/8"	11
99 505	8.1/2"	9.5/8"	12
99 506	9.1/2"	10.5/8"	13
99 507	10.1/2"	11.5/8"	14
99 508	11.1/2"	12.5/8"	15
99 509	12.1/2"	13.5/8"	16
99 510	13.1/2"	14.5/8"	17
99 511	14.1/2"	15.5/8"	18
99 512	15.1/2"	16.5/8"	18
99 513	16.1/2"	17.5/8"	19
99 514	17.1/2"	18.5/8"	20
99 515	18.1/2"	19.5/8"	21
99 516	19.1/2"	21"	23
99 517	21.1/2"	22.5/8"	24
99 518	22.1/2"	24"	25
99 519	24.1/2"	26"	27
99 525	29.1/2"	30.1/2"	32
99 526	35.1/2"	36.1/2"	38



C-Clamp

C-Clamp Air Kit

Air P/N	Range O.D.	
	from	to
99 630	1.1/8"	22"
99 650	22"	42.1/2"
99 532	41.1/2"	42.1/2"

C-Clamp Operated with Air Kit

Air P/N	Range O.D.		Total # of Links
	from	to	
99 500-1	3.3/4"	4.5/8"	5
99 501-1	4.1/2"	5.5/8"	6
99 502-1	5.1/2"	6.5/8"	7
99 503-1	6.1/2"	7.5/8"	8
99 504-1	7.1/2"	8.5/8"	9
99 505-1	8.1/2"	9.5/8"	10
99 506-1	9.1/2"	10.5/8"	11
99 507-1	10.1/2"	11.5/8"	12
99 508-1	11.1/2"	12.5/8"	13
99 509-1	12.1/2"	13.5/8"	14
99 510-1	13.1/2"	14.5/8"	15
99 511-1	14.1/2"	15.5/8"	16
99 512-1	15.1/2"	16.5/8"	17
99 513-1	16.1/2"	17.5/8"	18
99 514-1	17.1/2"	18.5/8"	19
99 515-1	18.1/2"	19.5/8"	20
99 516-1	19.1/2"	22"	22



SDL Type Series

Manual Side Door Elevator

The family of Forum Energy Technologies SDL manual side door elevators, which now includes a new smaller, lighter 100 short ton version, offers customers maximum simplicity, safety and quality. All elevators in this family are weight optimized, have lower ear connection points, and are being tested and manufactured in accordance with the latest API 8c edition.

BENEFITS

- Decreased HSE risks with safety pin features—no-go function when door is open
- Maximized quality and durability as the body and door are forged
- Improved efficiency and reduced downtime since the SDL elevators are easy to install and their ergonomic round ear geometry allow them to rotate
- Increased flexibility with the addition of the SDL-100 frame option

FEATURES

- One-hand operation of the door
- Designed for collar type casing, tubing and collars, 90-degree shoulder
- Lower ears are load rated to 5 tons for attaching slings/single joint option
- API 8c qualified, CE marked, ATEX marked

SPECIFICATIONS

Model	Range	Weight (depending on Diameter)	Load Rating	Link Size	
				Min*	Max
SDL-100/1	2 3/8" - 5 3/4"	189 lb (82 kg)	100 tons	1 3/4"	2 3/4"
SDL-150/1	4 3/4" - 8"	280 lb (112 kg)	150 tons	1 3/4"	3 1/2"
SDL-150/2	8" - 11"	315 lb (127 kg)	150 tons	1 3/4"	3 1/2"
SDL-150/3	11" - 14"	421 lb (170 kg)	150 tons	1 3/4"	3 1/2"
SDL-150/5	18" - 22"	695 lb (315 kg)	150 tons	1 3/4"	3 1/2"

*compatible with Forum 100/150ton perfection links

DIMENSIONS

Model	Width	Length	Height
SDL-100/1	25.39" (645 mm)	12.95" (329 mm)	11.51" (293 mm)
SDL-150/1	33.85" (860 mm)	14.76" (375 mm)	11.02" (280 mm)
SDL-150/2	34.80" (884 mm)	16.73" (425 mm)	10.47" (266 mm)
SDL-150/3	40.55" (1030 mm)	19.41" (493 mm)	11.42" (290 mm)
SDL-150/5	51.93" (1319 mm)	27.17" (690 mm)	11.42" (290 mm)

FORUM DRILLING TECHNOLOGIES

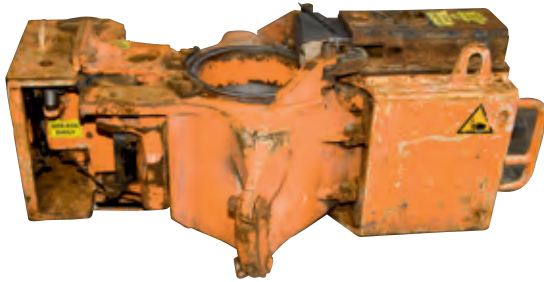
10344 Sam Houston Park Drive, Suite 300 / 1.844.525.3500 [t]
 f-e-t.com/drilling / oiltools@f-e-t.com
 Patented. Patent No's: 077111813, 201102, 933-7, 12/226.642.

Service and Repair

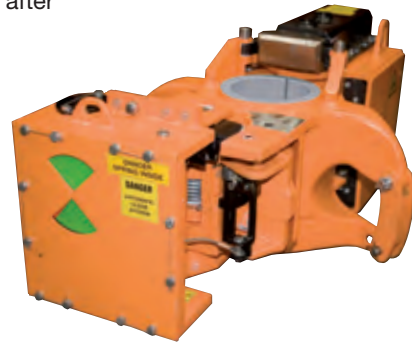
For all makes and models of
Pipe Handling Tools

ACL Center Latch, 18° Taper Elevator

before

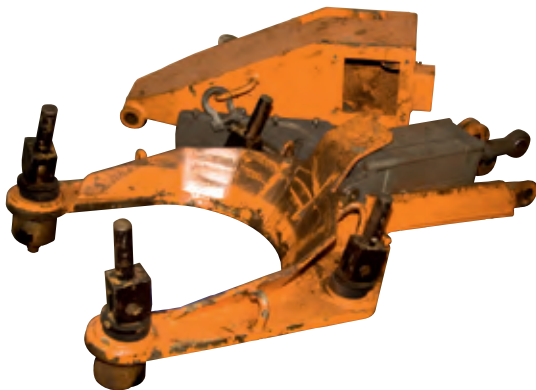


after

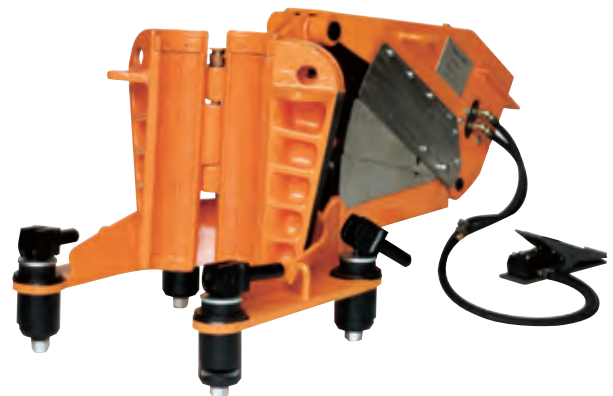


PSA 150 Power Slip

before



after



CL Center Latch, 18° Taper Elevator hydraulic

before



after



Slip Bowls

Forum is ready to deliver its Handling Tools according to the API 7K 6th edition.



The new 6th edition of the API 7K will become effective at the end of 2016. The 6th edition will form our new standard and Forum is ready to deliver its products accordingly. All new purchased equipment will comply with the new API 7K specifications after the effective date and will continuously meet CE and ATEX standards. Equipment purchased under the 5th edition can continue to be used "as is". Upcoming new load ratings for API 7K equipment will be defined and announced directly to our customers.

CHANGES

- Slip bowls will be load-rated according to the API 7K standard
- All Slip bowl designs must be verified by a "Design Verification Load Test" or an "Alternative Design Verification Test" (breaking load test)
- Slip bowls will be proof load tested to 1.5x the load rating according to the new API 7K standard
- Higher material requirements; Charpy test requirements 33J average value with no individual value below 26J

ANSWERS BY FORUM PIPE HANDLING TOOLS

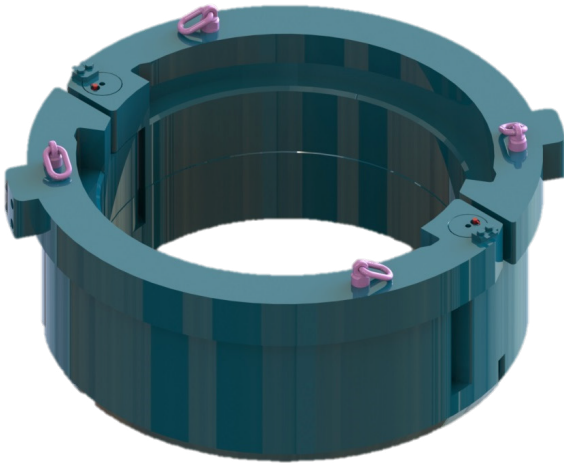
- Handling tools purchased under prior effective API standards can be used "as is"
- An equipment upgrade from 5th to the 6th edition version might be possible in some cases, primarily for the B + V product line. A new load rating classification may be necessary. Please contact Forum for information on detailed upgrade options
- Spare Parts and Service for equipment in operation and purchased under prior API 7K editions will be available. New part-numbers will be issued for new edition parts
- Additional API requirements will require extensive testing for the 7K equipment which may have an influence on the sales price

FORUM DRILLING TECHNOLOGIES

10344 Sam Houston Park Drive, Suite 300, Houston, TX 77064
1.844.525.3500 [t] / f-e-t.com/drilling / oiltools@f-e-t.com

Rotary Bushing

Forum is ready to deliver its Handling Tools according to the API 7K 6th edition.



The new 6th edition of the API 7K will become effective at the end of 2016. The 6th edition will form our new standard and Forum is ready to deliver its products accordingly. All new purchased equipment will comply with the new API 7K specifications after the effective date and will continuously meet CE and ATEX standards. Equipment purchased under the 5th edition can continue to be used "as is". Upcoming new load ratings for API 7K equipment will be defined and announced directly to our customers.

CHANGES

- Rotary bushings will be load-rated according to the API 7K standard
- Rotary bushings will be proof load tested to 1.5x the load rating according to the new API 7K standard. Rotary Bushings are exempt from proof load testing when loaded in compression only
- Marking of load rating and taper

ANSWERS BY FORUM PIPE HANDLING TOOLS

- Handling tools purchased under prior effective API standards can be used "as is"
- An equipment upgrade from 5th to the 6th edition version might be possible in some cases, primarily for the B + V product line. A new load rating classification may be necessary. Please contact Forum for information on detailed upgrade options
- Spare Parts and Service for equipment in operation and purchased under prior API 7K editions will be available. New part-numbers will be issued for new edition parts
- Additional API requirements will require extensive testing for the 7K equipment which may have an influence on the sales price

FORUM DRILLING TECHNOLOGIES

10344 Sam Houston Park Drive, Suite 300, Houston, TX 77064
1.844.525.3500 [t] / f-e-t.com/drilling / oiltools@f-e-t.com



Rotary Slips

Forum is ready to deliver its Handling Tools according to the API 7K 6th edition.

The new 6th edition of the API 7K will become effective at the end of 2016. The 6th edition will form our new standard and Forum is ready to deliver its products accordingly. All new purchased equipment will comply with the new API 7K specifications after the effective date and will continuously meet CE and ATEX standards. Equipment purchased under the 5th edition can continue to be used "as is". Upcoming new load ratings for API 7K equipment will be defined and announced directly to our customers.

CHANGES

- Rotary slips will be load-rated according to the API 7K standard
- All rotary slip designs must be verified by a "Design Verification Load Test" or an "Alternative Design Verification Test"(breaking load test)
- Rotary slip will be proof load tested to 1.5x the load rating according to the new API 7K standard - if load rating is above 500 tons
- Higher material requirements; Charpy test requirements 33J average value with no individual value below 26J and need to be documented
- Marking of load rating and taper

ANSWERS BY FORUM PIPE HANDLING TOOLS

- Handling tools purchased under prior effective API standards can be used "as is"
- An equipment upgrade from 5th to the 6th edition version might be possible in some cases, primarily for the B + V product line. A new load rating classification may be necessary. Please contact Forum for information on detailed upgrade options
- Spare Parts and Service for equipment in operation and purchased under prior API 7K editions will be available. New part-numbers will be issued for new edition parts
- Additional API requirements will require extensive testing for the 7K equipment which may have an influence on the sales price

FORUM DRILLING TECHNOLOGIES

10344 Sam Houston Park Drive, Suite 300, Houston, TX 77064
1.844.525.3500 [t] / f-e-t.com/drilling / oiltools@f-e-t.com

Slips and Carrier*

Forum is ready to deliver its Handling Tools according to the API 7K 6th edition.



The new 6th edition of the API 7K will become effective at the end of 2016. The 6th edition will form our new standard and Forum is ready to deliver its products accordingly. All new purchased equipment will comply with the new API 7K specifications after the effective date and will continuously meet CE and ATEX standards. Equipment purchased under the 5th edition can continue to be used "as is". Upcoming new load ratings for API 7K equipment will be defined and announced directly to our customers.

CHANGES

- Affected by the change are primary load carrying components*
- Slips and Carrier will be load-rated according to the API 7K standard
- Slips and Carrier designs must be verified by a "Design Verification Load Test" or an "Alternative Design Verification Test" (breaking load test)
- Slips and Carrier will be proof load tested to 1.5x the load rating according to the new API 7K standard
- Higher material requirements; Charpy test requirements 33J average value with no individual value below 26J and need to be documented
- Marking of load rating and taper. Taper for spiders w/o integral slips only

ANSWERS BY FORUM PIPE HANDLING TOOLS

- Handling tools purchased under prior effective API standards can be used "as is"
- An equipment upgrade from 5th to the 6th edition version might be possible in some cases, primarily for the B + V product line. A new load rating classification may be necessary. Please contact Forum for information on detailed upgrade options
- Spare Parts and Service for equipment in operation and purchased under prior API 7K editions will be available. New part-numbers will be issued for new edition parts
- Additional API requirements will require extensive testing for the 7K equipment which may have an influence on the sales price

FORUM DRILLING TECHNOLOGIES

10344 Sam Houston Park Drive, Suite 300, Houston, TX 77064
1.844.525.3500 [t] / f-e-t.com/drilling / oiltools@f-e-t.com

*i.e. Spider Slips, Power Slip Carrier and Slip assemblies

DRL1084.10.2016

World wide Representatives for Service, Stocking and Repair



Forum B + V Oil Tools GmbH

Hermann-Blohm-Strasse 2
20457 Hamburg
Germany
tel: +49 40 370 226 855
fax: +49 40 370 226 899
oiltools@f-e-t.com
www.f-e-t.com
www.blohmvoss-oiltools.com

Drilling Sales Headquarters

10344 Sam Houston Park Drive,
Suite 300
Houston, TX 77064
USA
tel: +1 713 351 7900
fax: +1 713 351 7997

FORUM ENERGY TECHNOLOGIES Drilling Service Locations

Email: ForumDR.Sales@f-e-t.com

USA

7914 Hwy 90 West
New Iberia, LA 70560 USA
tel: +1 337-365-5570
fax: +1 337-365-5562

USA

104 Teakwood Suite 3
Victoria, TX 77905 USA
tel: +1 361-576-1171
fax: +1 361-576-1002

Canada

#106, 3903 - 75 Ave
Leduc, Alberta T9E 0K3
tel: +1 780-980-0345
fax: +1 780-986-3278

Columbia

Parque Logistico Industrial Tabasco
Carretera Villahermosa-Cardenas Km 5.5
Col. Anacleto Canabal 4ta Secc. C.P.
86287
tel: +52 1 993 399 5985
tel: +51 1 993 269 5043

Singapore

No 51 Benoi Road #06-00
Liang Huat Industrial Complex, Singapore
629908
tel: +65 6465 4850
fax: +65 6465 4851
Out of hours +65 91389812

United Arab Emirates

Oilfields Supply Center
Building B-45
Jebel Ali Free Zone Dubai UAE
tel: +971 4 883 5266

Scotland

Peregrine Road, Westhill
Aberdeenshire, AB32 6JL
tel: +44 (0) 1224 744000

Scotland

Blackhill Industrial Estate Findon
Aberdeen, Scotland AB12 4RL
tel: +44 (0) 1224 782232
fax: +44 (0) 1224 782480

England

Remscheid Way, Jubilee Industrial Estate
Ashington, Northumberland NE63 8UJ
tel: +44 (0) 1670 840850
fax: +44 (0) 1670 810154

Version: 20 / 11, 2014
Dimensions and data subject to change without
any notice.
Copyright © 2013 by FB+V Oil Tools GmbH